



Sale

Icon Park

Kamala,

Kamala



฿ 4 403 633

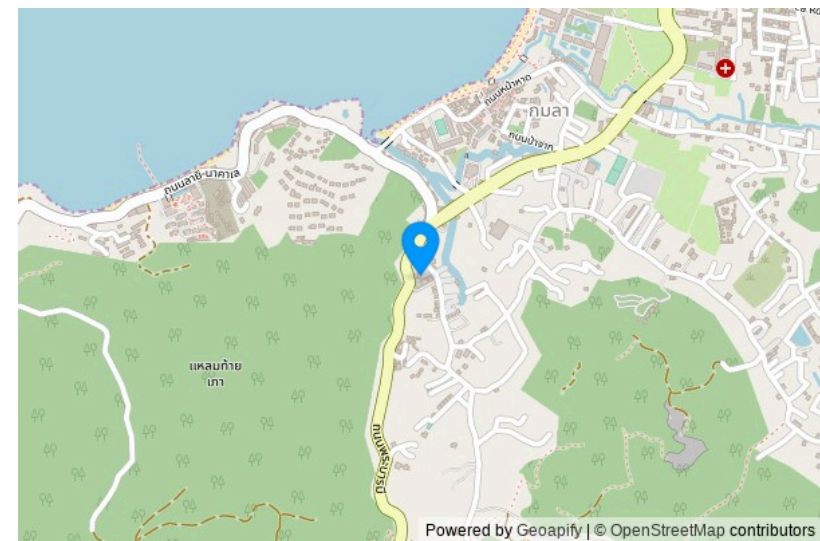
₱ 10 820 959

\$ 128 236

€ 116 154

Icon Park is a condominium project located in the Kamala area. It was built in November 2013 and has 92 apartments spread over 7 floors. It is the perfect place for those who want to escape the noise of the city and the tourist-crowded Patong. Here you will find peace and seclusion amidst scenic mountains. The project is located near the beaches of Kamala and Surin, known for their beauty, as well as other attractions. In the vicinity of the project, you will find numerous shops, restaurants, and other amenities. The uniquely designed buildings are surrounded by green landscapes. The apartments are spacious and well-planned. Each of them has large windows that offer stunning views of nature. All apartments are fully furnished and equipped with everything necessary for the convenience of the residents.

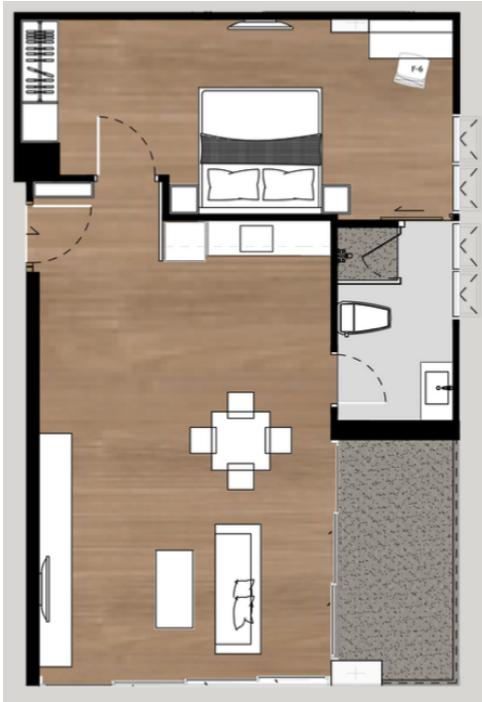




The Project Name: **Icon Park**
Housing Class: **Business class**
Completion Date: Year: **2013**

Construction Stage: **Ready for Occupancy**
Ownership: **Freehold/leasehold available**
Completion Date: Quarter: **4**

Layouts



1-bdr., 65 m²

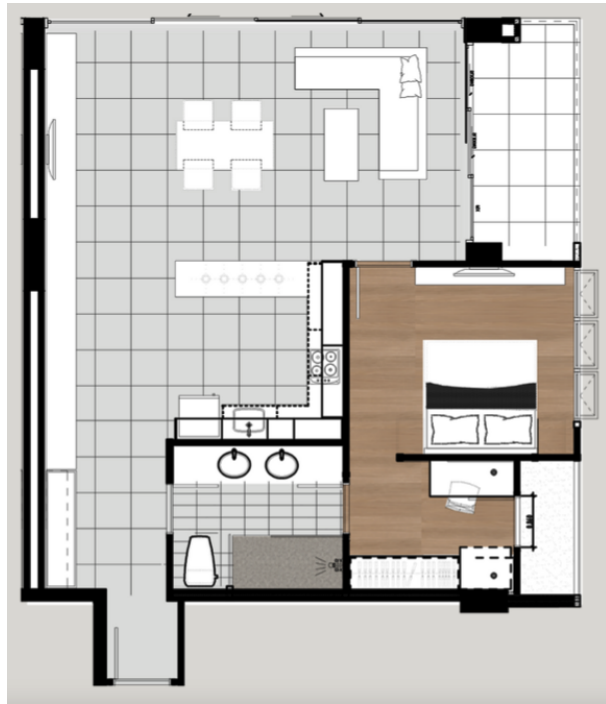
from ฿ 5,880,600

Bedrooms	1
Living Area	65 m ²
Floors	7
Bathrooms	1
Outdoor area	balcony
Furniture package	+
Floor	2

A one-bedroom apartment in the Icon Park condominium will be a wonderful place for a family to live or for a short vacation.

This is the perfect place for those who want to get away from the city noise and the crowded tourist areas of Patong. Here, you will find peace and solitude among the picturesque mountains. The project is located near the beautiful beaches of Kamala and Surin, as well as other attractions. In the vicinity of the project, you will find plenty of shops, restaurants, and other amenities.

Layouts



1-bdr., 85 m²

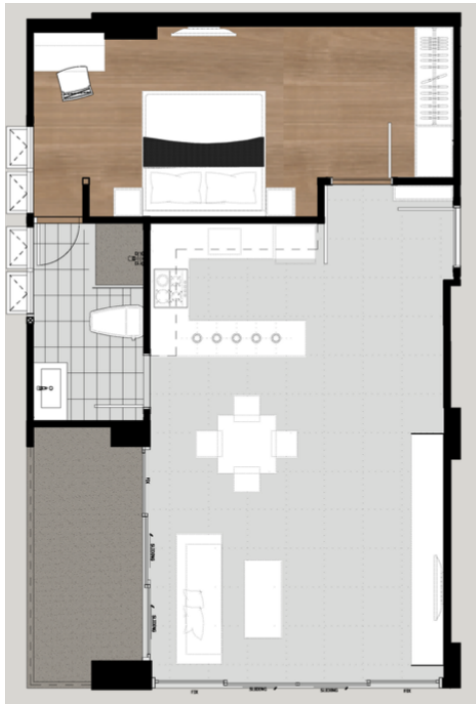
from ฿ 7,627,500

Bedrooms	1
Living Area	85 m ²
Floors	7
Bathrooms	1
Outdoor area	balcony
Furniture package	+
Floor	3

A one-bedroom apartment in the Icon Park condominium will be a wonderful place for a family to live or for a short vacation.

This is the perfect place for those who want to get away from the city noise and the crowded tourist areas of Patong. Here, you will find peace and solitude among the picturesque mountains. The project is located near the beautiful beaches of Kamala and Surin, as well as other attractions. In the vicinity of the project, you will find plenty of shops, restaurants, and other amenities.

Layouts



1-bdr., 66 m²

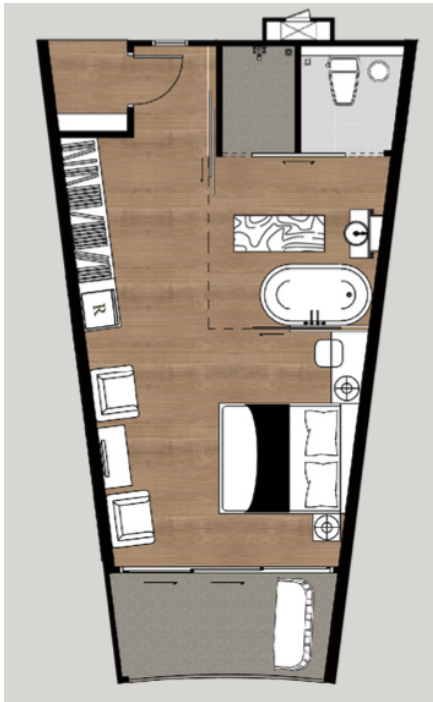
from ฿ 6,498,700

Bedrooms	1
Living Area	66 m ²
Floors	7
Bathrooms	1
Outdoor area	balcony
Furniture package	+
Floor	2

A one-bedroom apartment in the Icon Park condominium will be a wonderful place for a family to live or for a short vacation.

This is the perfect place for those who want to get away from the city noise and the crowded tourist areas of Patong. Here, you will find peace and solitude among the picturesque mountains. The project is located near the beautiful beaches of Kamala and Surin, as well as other attractions. In the vicinity of the project, you will find plenty of shops, restaurants, and other amenities.

Layouts



Studio, 46 m²

from **฿ 4,403,633**

Bedrooms	Studio
Living Area	46 m ²
Floors	7
Bathrooms	1
Outdoor area	balcony
Furniture package	+
Floor	3

A studio in the Icon Park condominium will be a wonderful place for living or a short stay.

This is an ideal place for those who want to escape the city noise and the crowded tourist areas of Patong. Here, you will find peace and seclusion among the picturesque mountains. The project is located not far from Kamala and Surin beaches, known for their beauty, as well as other attractions. In the project's vicinity, you will find many shops, restaurants, and other amenities.



Marketing Director

Yury Golovanov

y.golovanov@kalinka-realty.com

Kalinka Thailand

+66 97 783 0676

kalinka-thailand.com

office@kalinka-thailand.com

