

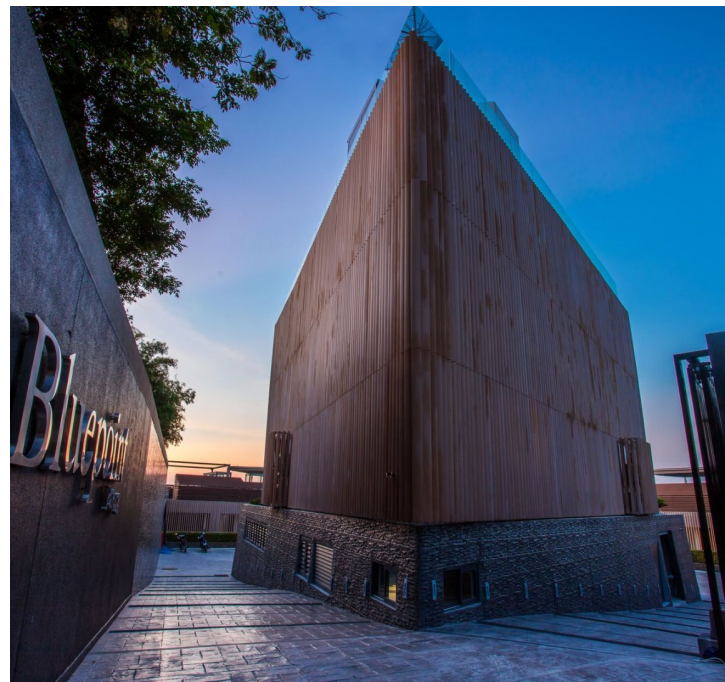


Sale

Bluepoint Condominium

Patong,

Pa Tong



฿ 19 200 000

₱ 47 179 776

\$ 559 116

€ 506 435

Bluepoint Condo offers you a unique opportunity to choose the view from your window thanks to a variety of layouts from one to five bedrooms. The apartment sizes range from 123 to 277 sq. m. The ground-floor apartments have a garden, pool, and dining area perfect for sunset dinners with a beautiful sea view and overlooking Patong Bay.

The low-rise complex consists of three three-story buildings, includes a spacious communal pool, parking, and beautiful landscaped areas for your enjoyment. Bluepoint apartments are also equipped with the 'Lutron Lighting Controls' system. This replaces traditional wiring and offers the most advanced technologies for owners. Bluepoint is equipped with smart technologies, and each apartment is equipped with a lighting control system that enhances the atmosphere, providing control over audio-video systems, in-room entertainment systems, blinds, and curtains. The main advantage is the ability to control any light or group of lighting devices to create 'light scenes'. Other benefits include reduced energy consumption and electricity costs due to more efficient use, extended lamp life, and reduced carbon dioxide emissions.

In creating the Bluepoint apartments, great attention was paid to the environment. The landscape design on green roofs is intended to reduce cooling costs and to harmonize the object with the environment. The roofs also serve for rainwater collection. Materials for construction and all engineering systems were chosen with a view to reducing operational and maintenance costs and minimizing the negative impact on the surrounding ecosystem. Investors can be assured that all possible measures have been taken to reduce their overall impact on the environment. Thanks to rainwater harvesting and water recycling systems, household appliances have an ecological rating of 5 out of 5, installed plumbing helps reduce water consumption, and high-efficiency smart air conditioners are placed in a well-ventilated and shaded area. Bluepoint Condominium is a project by Bluepoint Development Company Ltd. The construction of Bluepoint Condominium was completed in 2018 and includes 21 apartments. Apartment layouts range from two to five rooms.

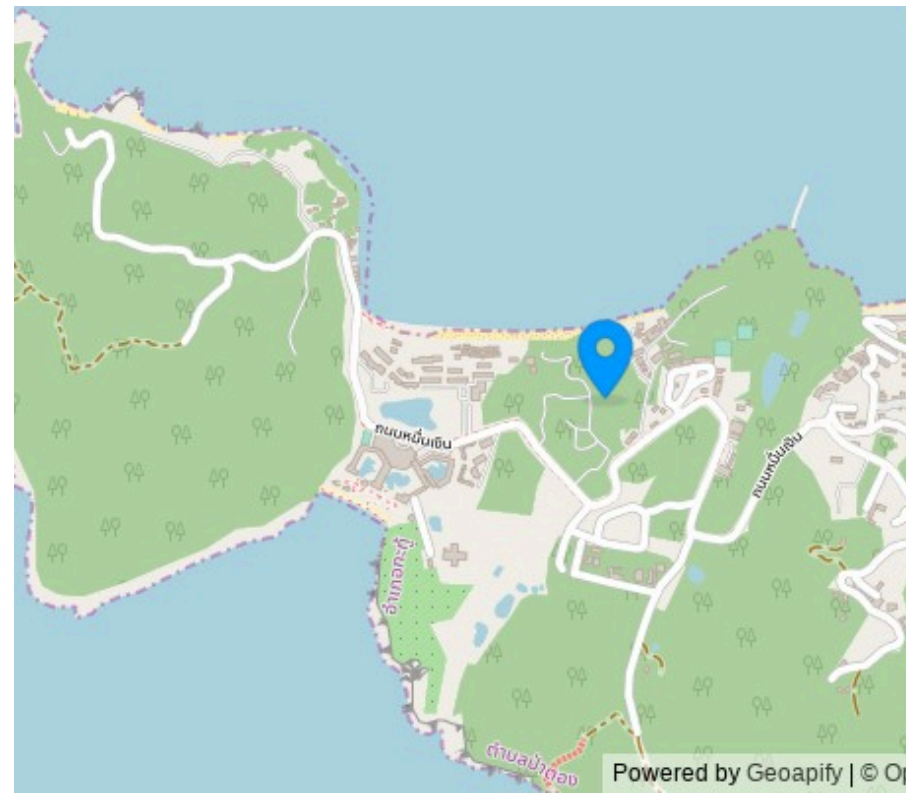




The Project Name: **The Blue Point Condo**
Housing Class: **Premium class**
Completion Date: Year: **2018**



Construction Stage: **Ready for Occupancy**
Ownership: **Freehold/leasehold available**
Completion Date: Quarter: **3**



Layouts



3-bdr., 144 m²

from ฿ 19,200,000

Bedrooms	3
Living Area	144 m ²
Floors	3
Bathrooms	3
Outdoor area	balcony
Floor	2

Luxurious three-bedroom apartments in the elite Bluepoint Condominium complex will be a perfect place for a large family to live or for a short vacation.

Bluepoint Condo offers you a unique opportunity to choose your view from the window, thanks to the variety of layouts ranging from one to five bedrooms. The apartment sizes range from 123 to 277 square meters. Ground-floor apartments feature a garden, a pool, and a dining area perfect for sunset dinners with a beautiful view of the sea and Patong Bay.

This low-rise complex consists of three buildings with three floors each, including a spacious communal pool, parking, and beautiful landscaped areas for your enjoyment. Bluepoint apartments are also equipped with 'Lutron Lighting Controls' system. It replaces traditional wiring and offers the most advanced technology for owners. Bluepoint is equipped with smart technology, and each apartment comes with a lighting control system that enhances the atmosphere, providing control over audio-video systems, room entertainment systems, blinds, and curtains. The main advantage is the ability to control any light or group of light fixtures to create 'light scenes.' Other benefits include reduced energy consumption, lower electricity costs due to more efficient usage, extended lamp life, and reduced carbon emissions.

Layouts



2-bdr., 140 m²
from ₪ 21,450,000

Bedrooms	2
Living Area	140 m ²
Floors	3
Bathrooms	3
Outdoor area	balcony
Floor	2

Luxurious two-bedroom apartments in the elite Bluepoint Condominium will become an excellent place for family living or a short-term getaway.

Bluepoint Condo offers you a unique opportunity to choose a view from the window due to a variety of floor plans ranging from one to five bedrooms. The apartment sizes range from 123 to 277 sq. m. Ground-floor apartments feature a garden, a pool, and a dining area, perfect for sunset dinners with a magnificent view of the sea and Patong Bay.

This low-rise complex consists of three three-story buildings, including a spacious shared pool, parking, and beautiful landscaped areas for your enjoyment. Bluepoint apartments are also equipped with the 'Lutron Lighting Controls' system. This replaces traditional wiring and offers the most advanced technology for owners. Bluepoint is equipped with smart technology, and each apartment has a lighting control system that enhances the atmosphere, providing control over audio-video systems, entertainment systems in the room, blinds, and curtains. The main advantage is the ability to control any light or group of light fixtures to create 'light scenes.' Other benefits include reduced energy consumption and lower electricity costs due to more efficient use, increased lamp life, and reduced carbon dioxide emissions.

Layouts



3-bdr., 150 m²
from ฿ 34,900,000

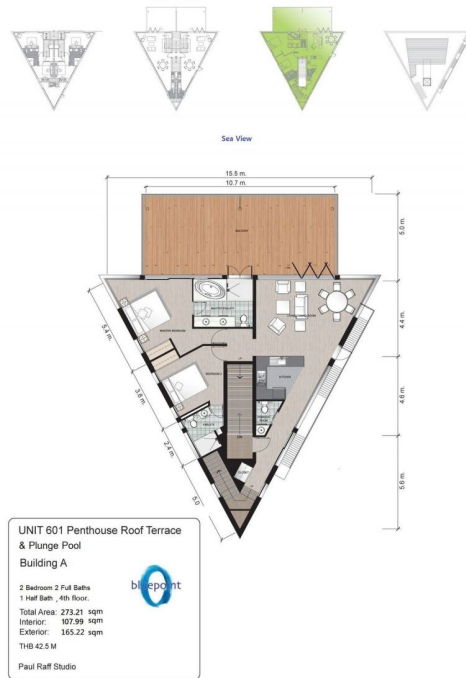
Bedrooms	3
Living Area	150 m ²
Floors	3
Bathrooms	3
Outdoor area	balcony
Floor	2

Luxurious three-bedroom apartments in the elite Bluepoint Condominium complex will be a perfect place for a large family to live or for a short vacation.

Bluepoint Condo offers you a unique opportunity to choose your view from the window, thanks to the variety of layouts ranging from one to five bedrooms. The apartment sizes range from 123 to 277 square meters. Ground-floor apartments feature a garden, a pool, and a dining area perfect for sunset dinners with a beautiful view of the sea and Patong Bay.

This low-rise complex consists of three buildings with three floors each, including a spacious communal pool, parking, and beautiful landscaped areas for your enjoyment. Bluepoint apartments are also equipped with 'Lutron Lighting Controls' system. It replaces traditional wiring and offers the most advanced technology for owners. Bluepoint is equipped with smart technology, and each apartment comes with a lighting control system that enhances the atmosphere, providing control over audio-video systems, room entertainment systems, blinds, and curtains. The main advantage is the ability to control any light or group of light fixtures to create 'light scenes.' Other benefits include reduced energy consumption, lower electricity costs due to more efficient usage, extended lamp life, and reduced carbon emissions.

Layouts



2-bdr., 273 m²

from ₪ 42,500,000

Bedrooms	2
Living Area	273 m ²
Floors	3
Bathrooms	3
Outdoor area	balcony
Floor	1

Luxurious two-bedroom apartments in the elite Bluepoint Condominium will become an excellent place for family living or a short-term getaway.

Bluepoint Condo offers you a unique opportunity to choose a view from the window due to a variety of floor plans ranging from one to five bedrooms. The apartment sizes range from 123 to 277 sq. m. Ground-floor apartments feature a garden, a pool, and a dining area, perfect for sunset dinners with a magnificent view of the sea and Patong Bay.

This low-rise complex consists of three three-story buildings, including a spacious shared pool, parking, and beautiful landscaped areas for your enjoyment. Bluepoint apartments are also equipped with the 'Lutron Lighting Controls' system. This replaces traditional wiring and offers the most advanced technology for owners. Bluepoint is equipped with smart technology, and each apartment has a lighting control system that enhances the atmosphere, providing control over audio-video systems, entertainment systems in the room, blinds, and curtains. The main advantage is the ability to control any light or group of light fixtures to create 'light scenes.' Other benefits include reduced energy consumption and lower electricity costs due to more efficient use, increased lamp life, and reduced carbon dioxide emissions.

Layouts



5+-bdr., 274 m²

from ฿ 62,900,000

Bedrooms	5+
Living Area	274 m ²
Floors	3
Bathrooms	5
Outdoor area	balcony
Floor	3

A luxurious penthouse with five bedrooms in the elite Bluepoint Condominium complex will be a wonderful place for a large family to live or for a short vacation.

Bluepoint Condo offers you a unique opportunity to choose a view from your window thanks to a variety of layouts ranging from one to five bedrooms. The area of the apartments varies from 123 to 277 square meters. On the ground floor, there is a garden, a pool, and a dining area, perfect for dining at sunset with a beautiful view of the sea and Patong Bay.

This low-rise complex consists of three buildings with three floors each, including a spacious communal pool, parking, and beautiful landscaped areas for your enjoyment. Bluepoint apartments are also equipped with 'Lutron Lighting Controls' system. This replaces traditional wiring and offers the most advanced technologies for owners. Bluepoint is equipped with smart technology, and each apartment has a lighting control system that enhances the atmosphere, providing control over audio-video systems, entertainment systems in the room, blinds, and curtains. The main advantage is the ability to control any light or group of light fixtures to create 'light scenes.' Other benefits include reducing energy consumption and reducing electricity costs through more efficient use, increasing lamp life, and reducing carbon emissions.



Marketing Director

Yury Golovanov

y.golovanov@kalinka-realty.com

Kalinka Thailand

+66 97 783 0676

kalinka-thailand.com

office@kalinka-thailand.com

