



**Sale**

## **The Title Modeva**

Bang Tao,

Soi Cherngtalay 14

COMPUTER GENERATED. ANY CHANGE CAN BE APPLIED WITHOUT NOTICE. ALL RIGHTS RESERVED



THE IMAGES SHOWN ARE COMPUTER GENERATED. ANY CHANGE CAN BE APPLIED WITHOUT NOTICE. ALL RIGHTS RESERVED



THE IMAGES SHOWN ARE COMPUTER GENERATED. ANY CHANGE CAN BE APPLIED WITHOUT NOTICE. ALL RIGHTS RESERVED

**฿ 4 466 000**

**₱ 11 126 414**

**\$ 131 099**

**€ 120 986**

Title Modeva is a unique residential project located just 500 meters from Bang Tao Beach in Phuket. This development represents a new vision of modern living, where every day is filled with comfort and freedom of choice. The project features 859 apartments in seven buildings, surrounded by nature and top-tier infrastructure. Prime Location The complex is in close proximity to key attractions in Phuket, including:

- Beaches: Bang Tao (500 m), Surin (4 km), Patong (6.6 km)
- Marinas: Royal Phuket Marina (13.6 km), Boat Lagoon (12.8 km)
- Phuket International Airport — only 17 km away
- Leisure and Shopping Centers: Porto de Phuket, Villa Market, Central Phuket Floresta

Complex Infrastructure Title Modeva offers 59 unique zones for relaxation and leisure, including:

- Outdoor pools, Jacuzzis, and relaxation areas
- Beach and sports zones, including a gym and golf simulator
- Lounge areas, a library, children's clubs, and a cinema
- Private spa, sauna, steam room, and wellness treatments
- A designated area for pets

Every corner of the complex is designed to ensure maximum comfort and enjoyment for its residents.

Apartment Options The project offers a variety of layouts, from cozy one-bedroom apartments to spacious penthouses:

- 1-bedroom units (29–51 sq.m.)
- 1-bedroom plus units (55–58 sq.m.)
- 2-bedroom units (65–95 sq.m.)
- Penthouses and duplexes (93–148 sq.m.)

Each apartment is designed in a modern style, using natural materials to create an atmosphere of comfort and harmony. Inspired by Nature The architecture of the complex is inspired by the gentle flow of ocean waves, with soft curves and natural textures reflecting the movement of water. Spaces are designed to provide privacy and tranquility, while open terraces and panoramic views allow residents to fully enjoy the beauty of the surrounding nature.





The Project Name: **The Title Modeva**  
Housing Class: **Business class**  
Completion Date: Year: **2027**

Construction Stage: **Pre-Sale**  
Ownership: **Freehold/leasehold available**  
Completion Date: Quarter: **4**

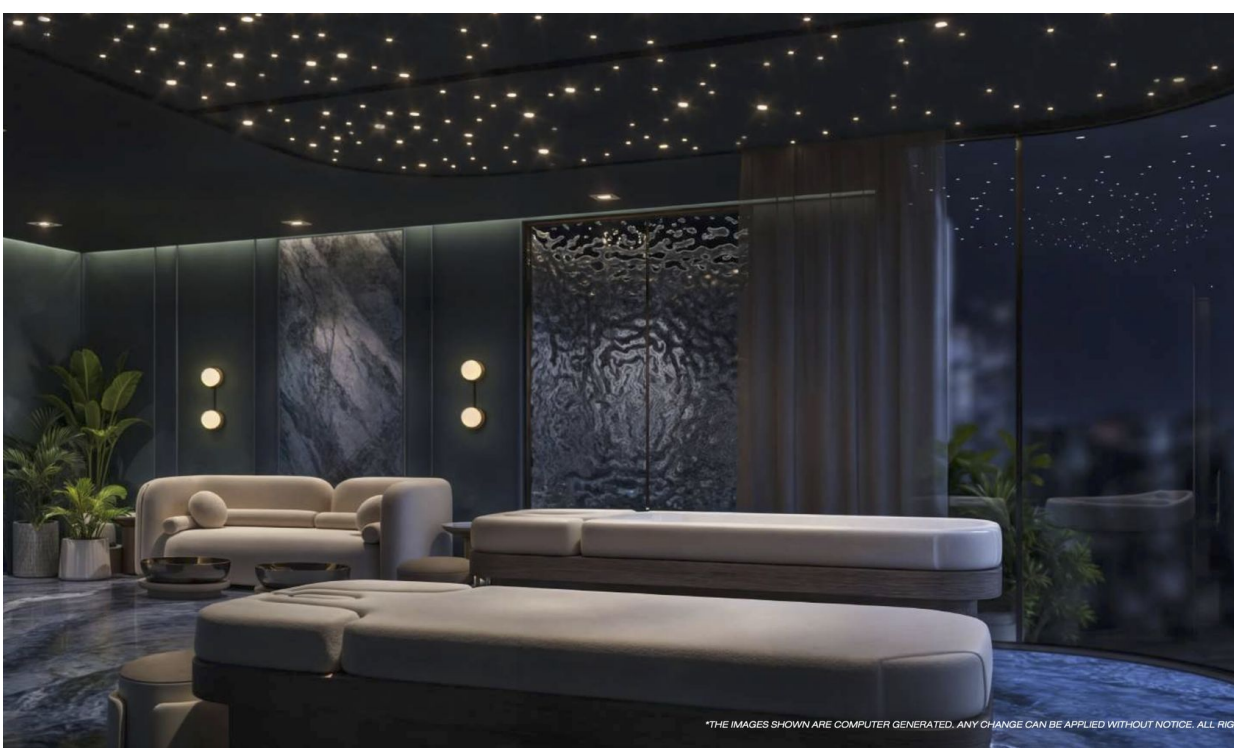


\*THE IMAGES SHOWN ARE COMPUTER GENERATED. ANY CHANGE CAN BE APPLIED WITHOUT NOTICE. ALL RIGHTS RESERVED.



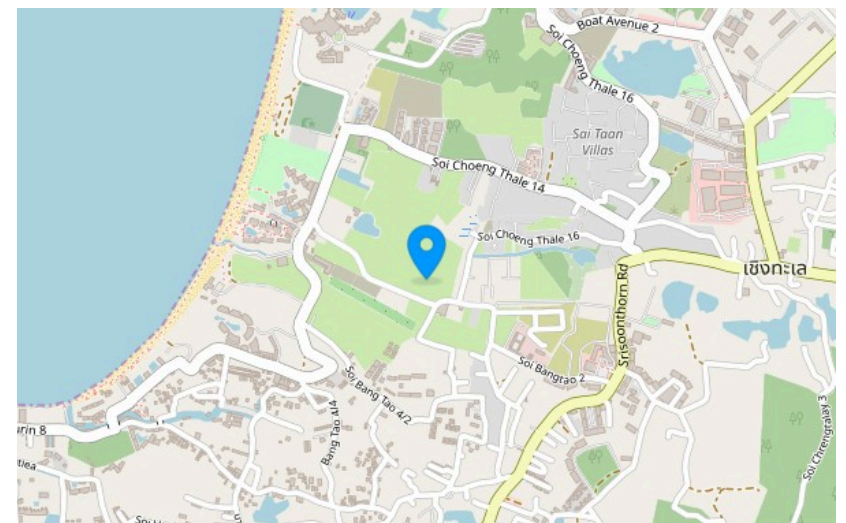
\*THE IMAGES SHOWN ARE COMPUTER GENERATED. ANY CHANGE CAN BE APPLIED WITHOUT NOTICE. ALL RIGHTS RESERVED.





THE IMAGES SHOWN ARE COMPUTER GENERATED. ANY CHANGE CAN BE APPLIED WITH

THE IMAGES SHOWN ARE COMPUTER GENERATED. ANY CHANGE CAN BE APPLIED WITHOUT NOTICE. ALL RIG



## Layouts



**1-bdr.**

**from ₪ 4,466,000**

Bedrooms	1
Living Area	29 M <sup>2</sup>
Floors	7
Bathrooms	1
Outdoor area	balcony
Floor	2

The Title Modeva one bedroom apartment is a great holiday home and a great investment.

This development represents a new vision of modern living, where every day is filled with comfort and freedom of choice. The project features 859 apartments in seven buildings, surrounded by nature and top-tier infrastructure.

Each apartment is designed in a modern style, using natural materials to create an atmosphere of comfort and harmony.



## Layouts



**2-bdr.**

**from ₪ 9,620,000**

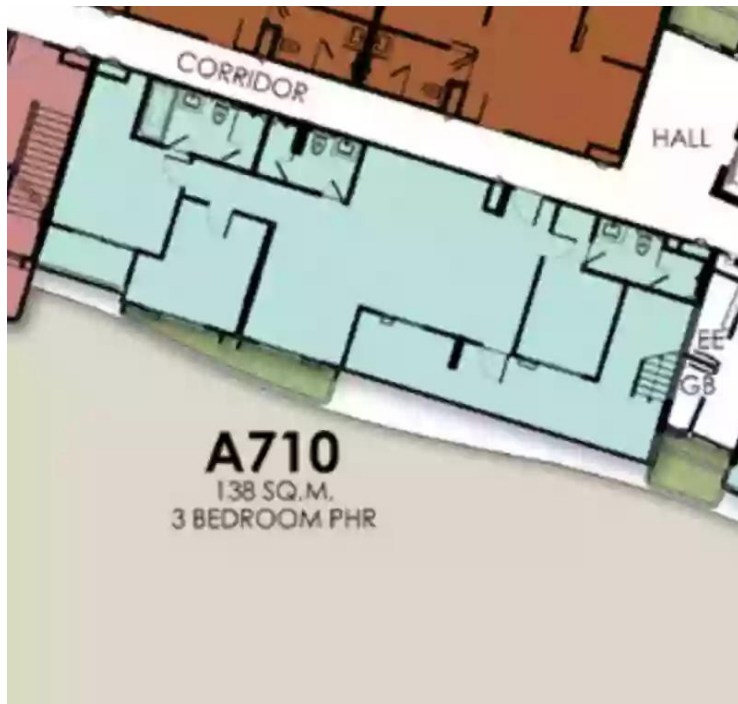
Bedrooms	2
Living Area	65 M <sup>2</sup>
Floors	7
Bathrooms	2
Outdoor area	balcony
Floor	2

The Title Modeva two bedroom apartment is a great place to live and relax or as a profitable investment.

This development represents a new vision of modern living, where every day is filled with comfort and freedom of choice. The project features 859 apartments in seven buildings, surrounded by nature and top-tier infrastructure.

Each apartment is designed in a modern style, using natural materials to create an atmosphere of comfort and harmony.

## Layouts



**3-bdr.**

**from ₪ 20,020,000**

Bedrooms	3
Living Area	130 m <sup>2</sup>
Floors	7
Bathrooms	3
Outdoor area	balcony
Floor	7

The Title Modeva 3 Bedroom Penthouse is a great place to live or vacation.

This development represents a new vision of modern living, where every day is filled with comfort and freedom of choice. The project features 859 apartments in seven buildings, surrounded by nature and top-tier infrastructure.

Each apartment is designed in a modern style, using natural materials to create an atmosphere of comfort and harmony.



Marketing Director

**Yury Golovanov**

[y.golovanov@kalinka-realty.com](mailto:y.golovanov@kalinka-realty.com)

Kalinka Thailand

+66 97 783 0676

[kalinka-thailand.com](http://kalinka-thailand.com)

[office@kalinka-thailand.com](mailto:office@kalinka-thailand.com)



WITHOUT NOTICE. ALL RIGHTS RESERVED