



Sale

The Marin Phuket

Kamala,

Soi Kamala 12



฿ 6 300 000

₱ 15 480 864

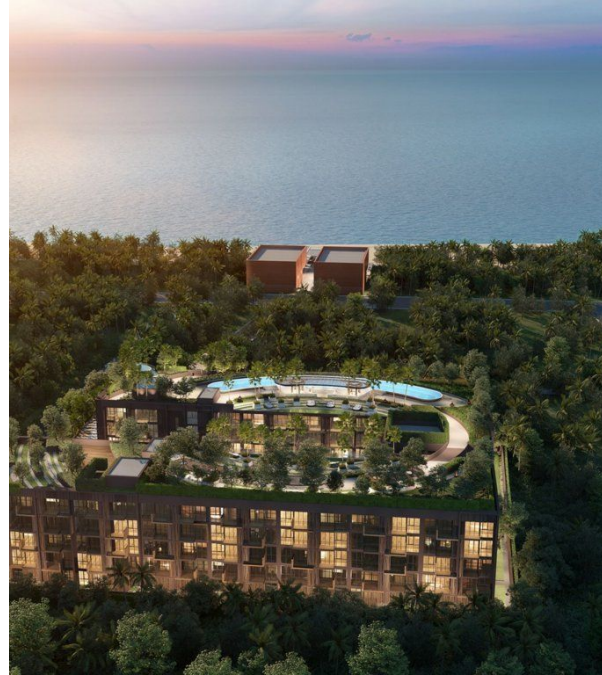
\$ 183 460

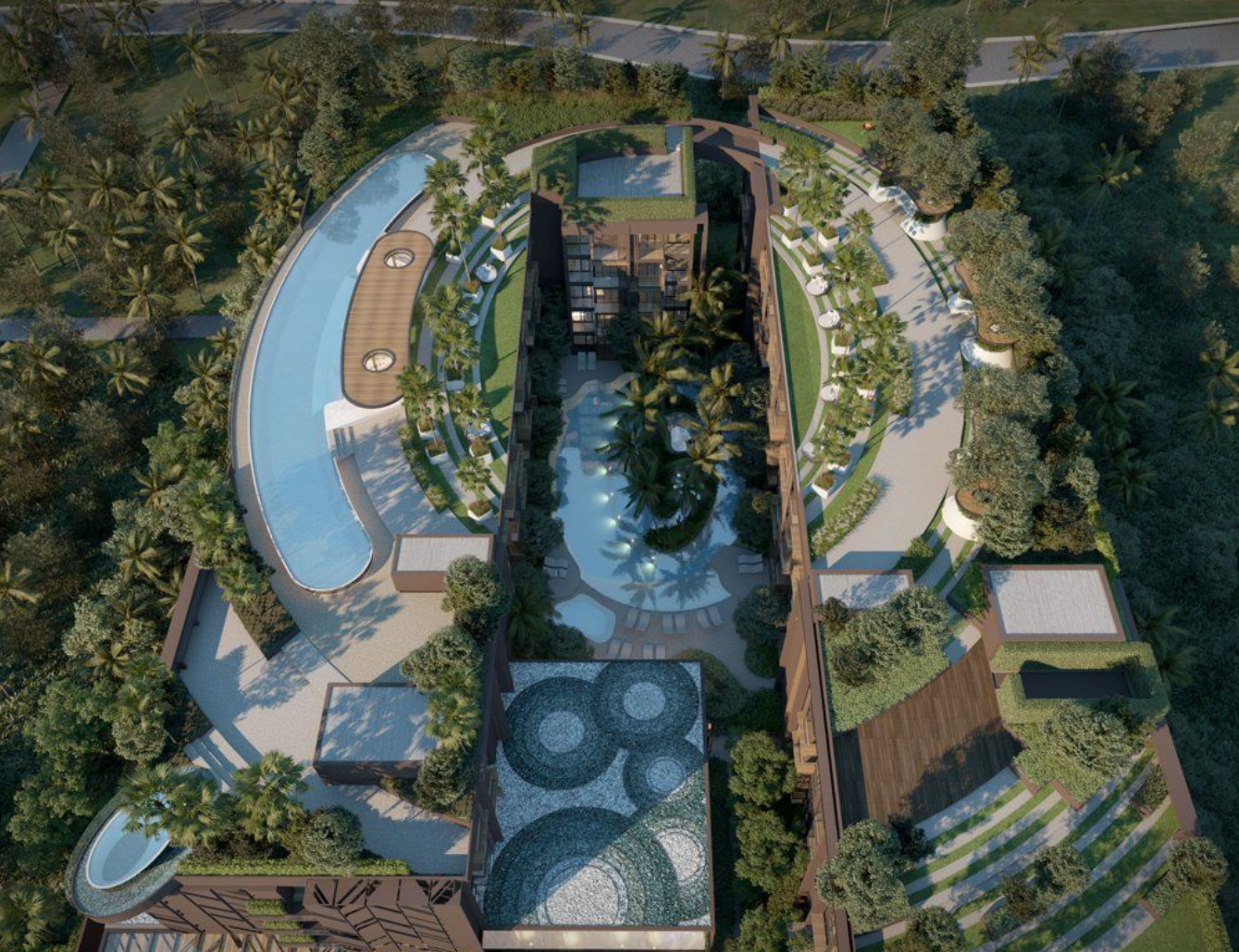
€ 166 174

The Marin Phuket residential complex, designed in a modern style, is located in close proximity to Kamala Beach, just 200 meters away. The complex consists of two five-story buildings housing 260 apartments ranging from 37 to 72 sq. m. The apartments feature a soft color palette, emphasizing the calm rhythm of life in the project. The complex has 4 swimming pools, including one on the rooftop, as well as separate jacuzzi zones. The reception area is styled reminiscent of an underwater world. The roof of one of the buildings is adorned with a garden and relaxation area. The two buildings are connected by a bridge, offering panoramic views of the surrounding area. A fitness center is available for health enthusiasts. Young guests will find the space designed like a pirate ship interesting. The thoughtful arrangement of common areas in The Marin complex, combined with its proximity to the sea, makes the project attractive for investment.

The Marin Phuket condominium is conveniently located: the beach and various infrastructure facilities such as banks, restaurants, shops, and massage parlors are within a 5-10 minute walk. In the same area are a 24-hour mini-market, Big C supermarket, and local farmers' markets. Nearby is the famous beach club Cafe Del Mar, as well as the evening entertainment parks Fantasea and Carnival Magic.

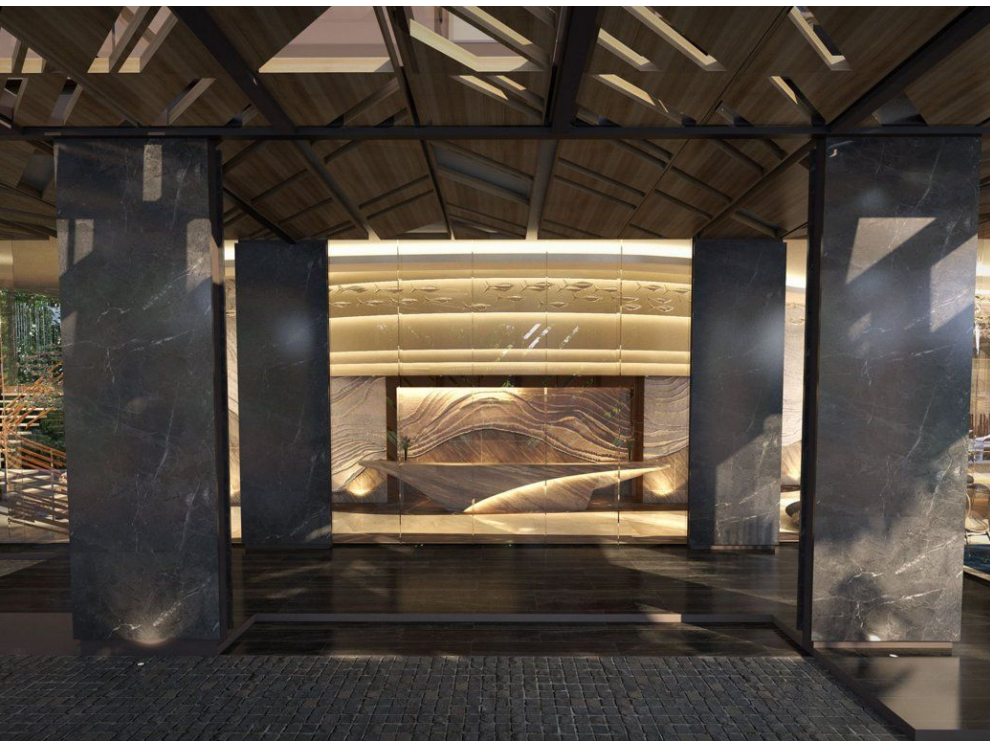
The developer of the project, Phuket Smile, comprises three organizations well-established in the local construction market. These include Ka Yun Kran Kiet - a leading building contractor in Phuket with extensive experience in implementing hotel and residential projects such as Duangjitt hotel, Patong Bay Hill residential complex, Laguna Park cottage settlement, Maikhao Palm Beach Resort and Ramada Plaza Chaofa hotels, The Panora Phuket condominium, and many others. Thanabatchai Co., Ltd. is a company with half a century of experience in land sales, equipment rental, and construction. The company's portfolio includes completed projects covering 4,800,000 sq. m. in various provinces of Thailand. Ile Agency & Development Co., Ltd. is a leading agency specializing in construction project management. Over the last two years, the company has successfully implemented three projects: The Panora Phuket residential complex, The Panora villa complex, and The Panora Pattaya residential complex. The total value of the projects managed by the experienced marketing team amounts to 5400 million baht.

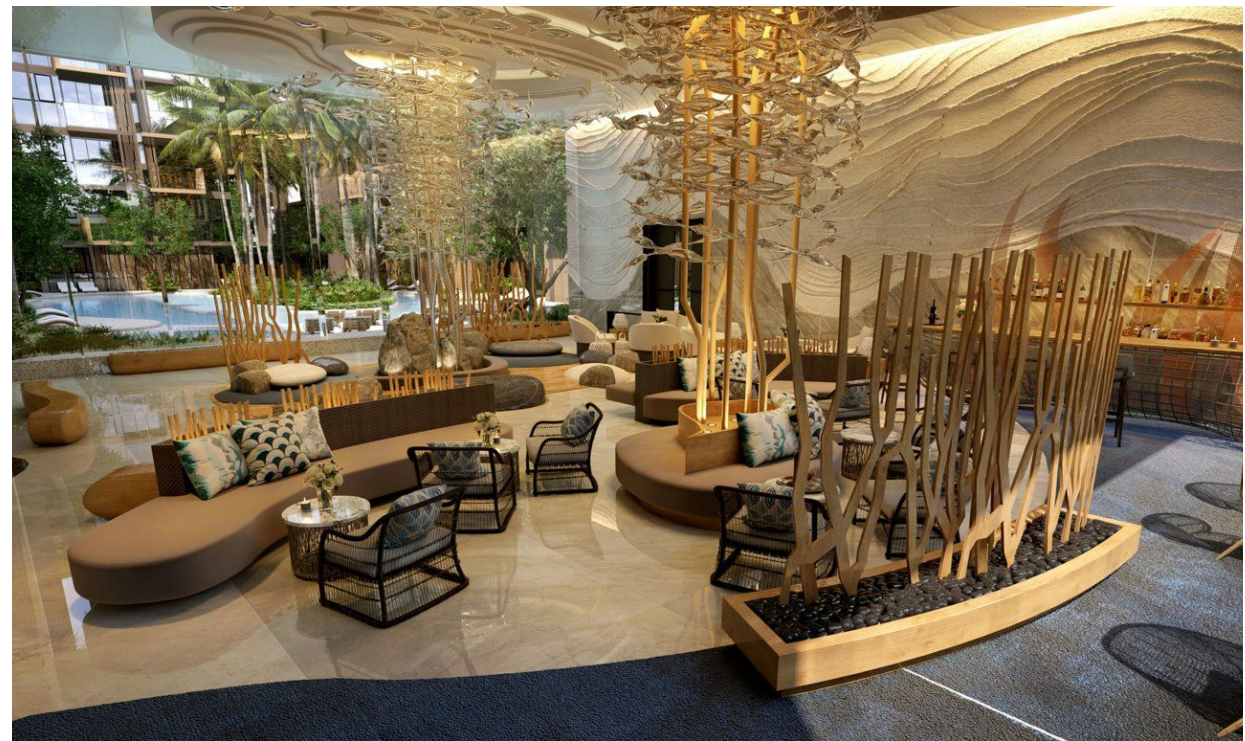




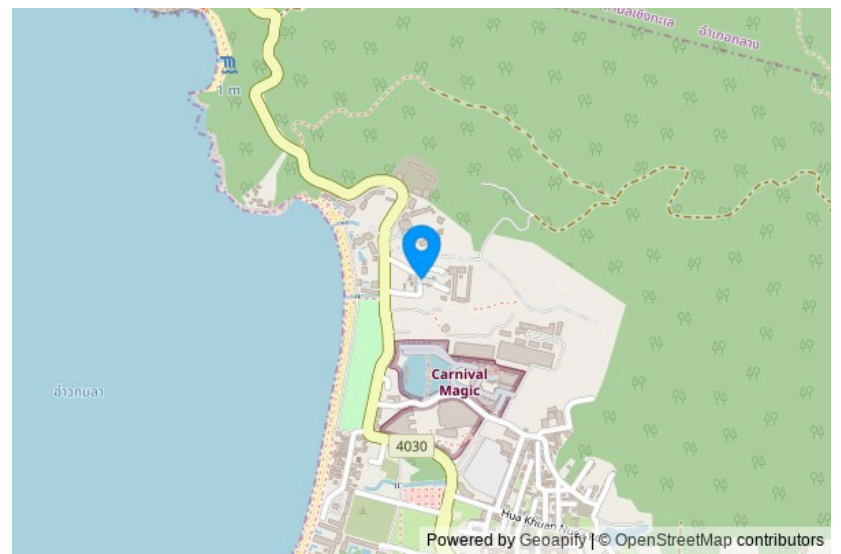
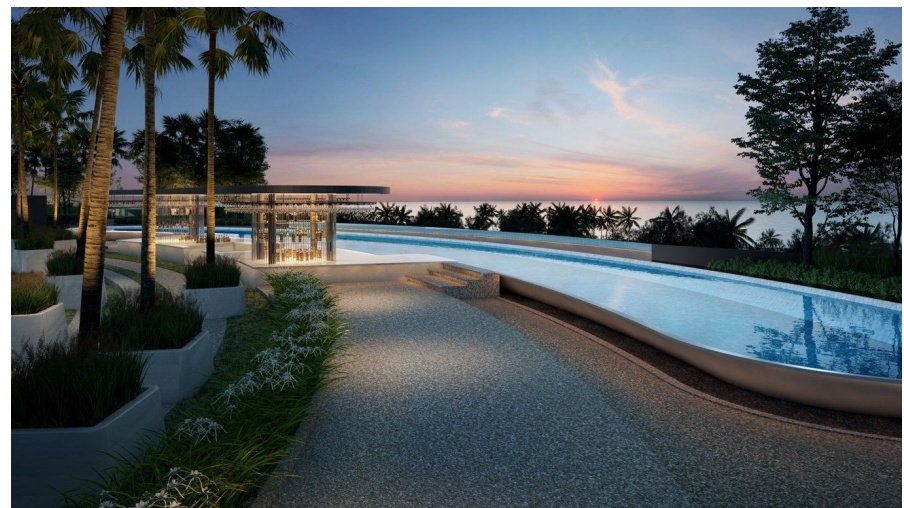
The Project Name: **The Marin Phuket**
Housing Class: **Comfort class**
Completion Date: Year: **2023**

Construction Stage: **Ready for Occupancy**
Ownership: **Freehold/leasehold available**
Completion Date: Quarter: **3**









Layouts



Studio, 40 m²

from **฿ 6,300,000**

Bedrooms	Studio
Living Area	40 m ²
Floors	5
Bathrooms	1
Outdoor area	balcony
Furniture package	+
Floor	2

The Marin Phuket residential complex, designed in a modern style, is located in close proximity to Kamala Beach, just 200 meters away. The complex consists of two five-story buildings housing 260 apartments ranging from 37 to 72 sq. m. The apartments feature a soft color palette, emphasizing the calm rhythm of life in the project.

The complex has 4 swimming pools, including one on the rooftop, as well as separate jacuzzi zones. The reception area is styled reminiscent of an underwater world. The roof of one of the buildings is adorned with a garden and relaxation area. The two buildings are connected by a bridge, offering panoramic views of the surrounding area. A fitness center is available for health enthusiasts. Young guests will find the space designed like a pirate ship interesting. The thoughtful arrangement of common areas in The Marin complex, combined with its proximity to the sea, makes the project attractive for investment.

The Marin Phuket condominium is conveniently located: the beach and various infrastructure facilities such as banks, restaurants, shops, and massage parlors are within a 5-10 minute walk. In the same area are a 24-hour mini-market, Big C supermarket, and local farmers' markets. Nearby is the famous beach club Cafe Del Mar, as well as the evening entertainment parks Fantasea and Carnival Magic.

The developer of the project, Phuket Smile, comprises three organizations well-established in the local construction market. These include Ka Yun Kran Kiet - a leading building contractor in Phuket with extensive experience in implementing hotel and residential projects such as Duangjitt hotel, Patong Bay Hill residential complex, Laguna Park cottage settlement, Maikhao Palm Beach Resort and Ramada Plaza Chaofa hotels, The Panora Phuket condominium, and many others. Thanabatchai Co., Ltd. is a company with half a century of experience in land sales, equipment rental, and construction. The company's portfolio includes completed projects covering 4,800,000 sq. m. in various provinces of Thailand. Ile Agency & Development Co., Ltd. is a leading agency specializing in construction project management. Over the last two years, the company has successfully implemented three projects: The Panora Phuket residential complex, The Panora villa complex, and The Panora Pattaya residential complex. The total value of the projects managed by the experienced marketing team amounts to 5400 million baht.



Marketing Director

Yury Golovanov

y.golovanov@kalinka-realty.com

Kalinka Thailand

+66 97 783 0676

kalinka-thailand.com

office@kalinka-thailand.com

