

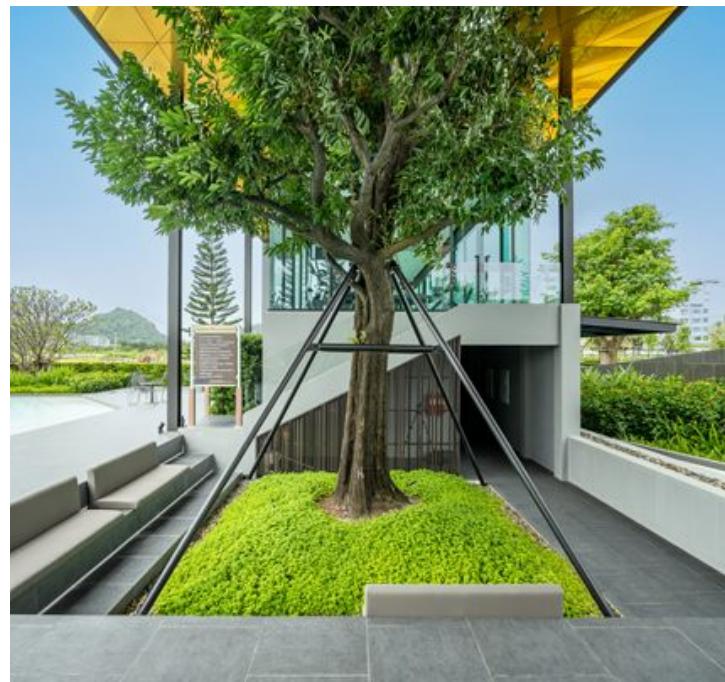


Sale

Siwalee Rassada

Central Phuket,

Ratsada



฿ 12 100 000

₱ 29 733 088

\$ 352 359

€ 319 159

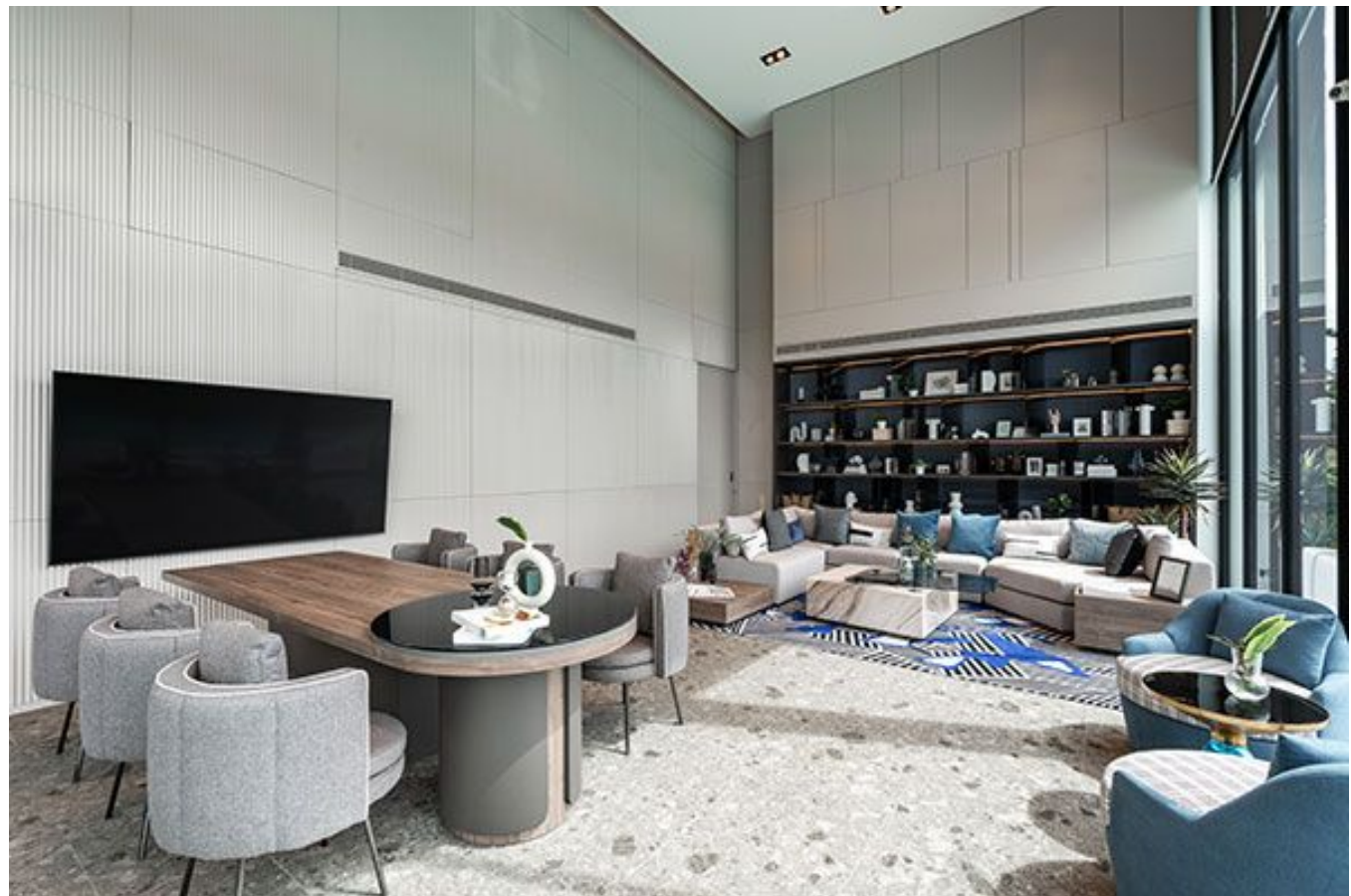
Siwalee Rassada is a modern residential complex on the island of Phuket, Thailand, offering a high level of comfort and quality of life.

The complex offers unique villas, each designed in a modern style and equipped with all necessary amenities. The usable area of the villas starts from 166 sq. m, and each includes multifunctional rooms and bedrooms on the first floor, providing all the conditions for modern living.

The complex's infrastructure includes a clubhouse, fitness room, swimming pool, children's pool, and lakeside community areas, creating ideal conditions for relaxation and leisure. Special attention is given to residents' security — the triple security system includes 24-hour security, card-key access, and video surveillance, ensuring peace and confidence.

Located in the very center of the island, Siwalee Rassada offers convenient access to all main infrastructure facilities and Phuket's beaches. It is the perfect choice for those who value modern comfort and safety.

Do not miss the opportunity to become an owner of a villa in Siwalee Rassada with unique conditions from Kalinka Thailand. Our brokers will offer you favorable purchasing terms and full support at all stages of the transaction.





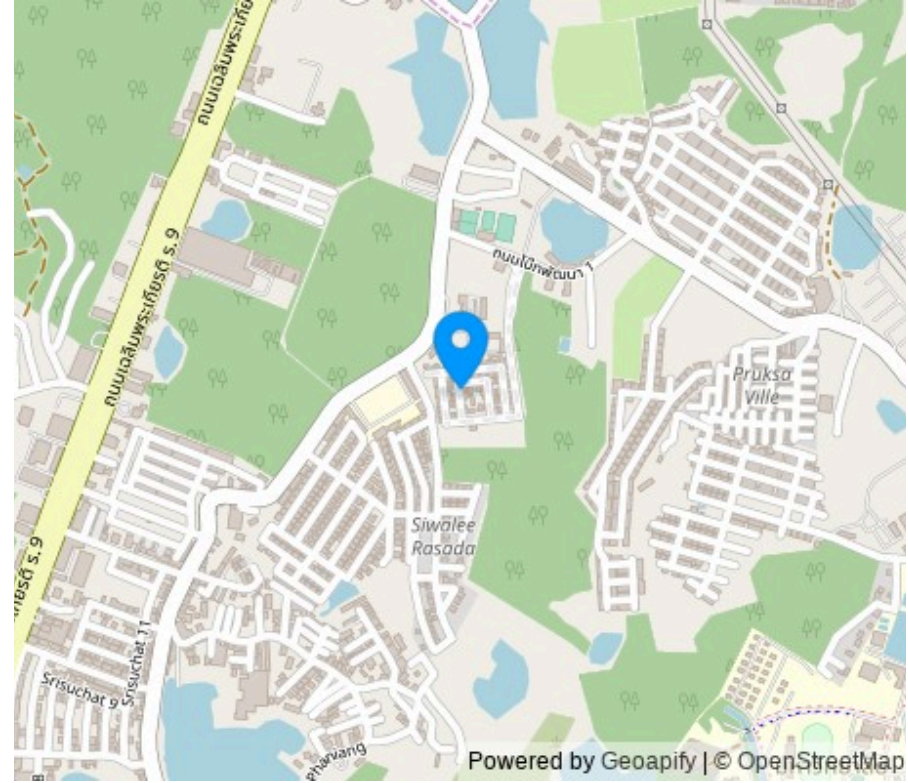
Construction date: year: 2020

Payment Installment: **Interest-Free Construction Period
Installment**



Ownership: **Freehold for building/leasehold for land**

Distance to the Beach: **3500 m.**



Layouts



190 м²

from \$ 12,100,000

Living area	190 м ²
Land plot	67 м ²
Bedrooms	4
Bathrooms	4
Количество этажей	2

The Siwalee Rassada four-bedroom villa will be a wonderful place for a large family to live.

The complex offers unique villas, each designed in a modern style and equipped with all necessary amenities. The usable area of the villas starts from 166 sq. m, and each includes multifunctional rooms and bedrooms on the first floor, providing all the conditions for modern living.

Layouts



218 м²

from ₸ 14,200,000

Living area	218 м ²
Land plot	81 м ²
Bedrooms	4
Bathrooms	4
Количество этажей	2

The Siwalee Rassada four-bedroom villa will be a wonderful place for a large family to live.

The complex offers unique villas, each designed in a modern style and equipped with all necessary amenities. The usable area of the villas starts from 166 sq. m, and each includes multifunctional rooms and bedrooms on the first floor, providing all the conditions for modern living.



Marketing Director

Yury Golovanov

y.golovanov@kalinka-realty.com

Kalinka Thailand

+66 97 783 0676

kalinka-thailand.com

office@kalinka-thailand.com

