



Sale

Wyndham Fantasea Chalong

Chalong,

Chalong



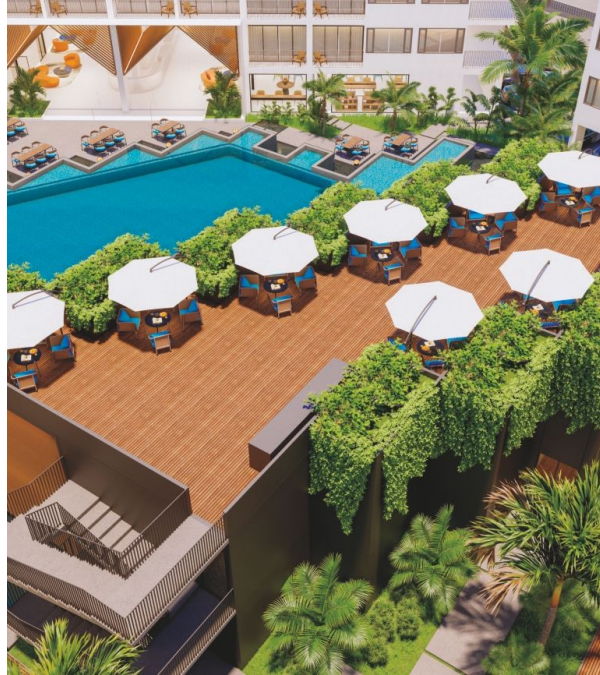
฿ **2 464 000**

₱ **6 017 630**

\$ **73 118**

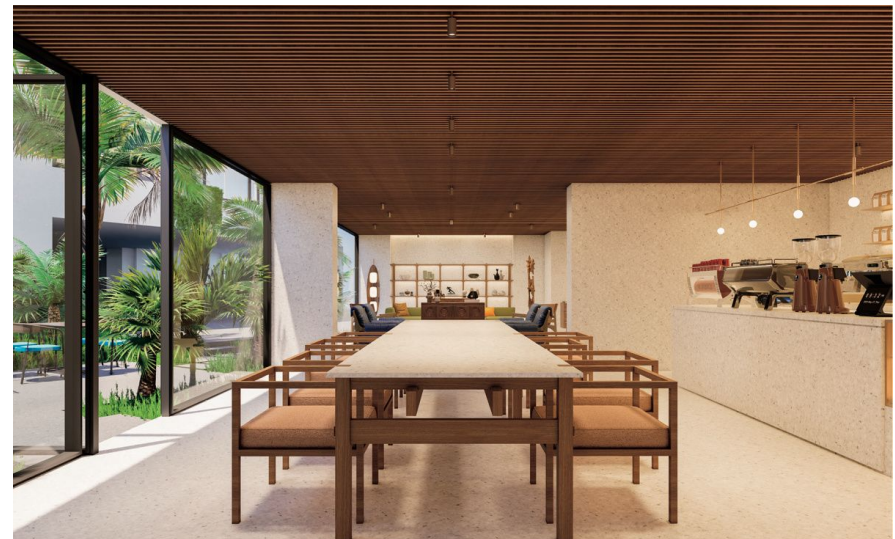
€ **64 233**

Discover Wyndham Fantasea Chalong condominium in southern Phuket, where tropical charm blends with modern amenities. Just steps from Robinson Lifestyle Chalong and a short drive from the enchanting southern beaches, this unique development offers you a unique living experience in comfort and well-being. Immerse yourself in the Wyndham Fantasea Condo Chalong lifestyle, from the spacious pool to Southeast Asian-inspired dining, work and gym areas. It's a short walk to Muay Thai Street and RIS Phuket International School. Take advantage of the Wyndham Fantasea, where affordability meets your needs and nature meets modern living. Kalinka Thailand brokers always have unique offers and purchasing conditions.

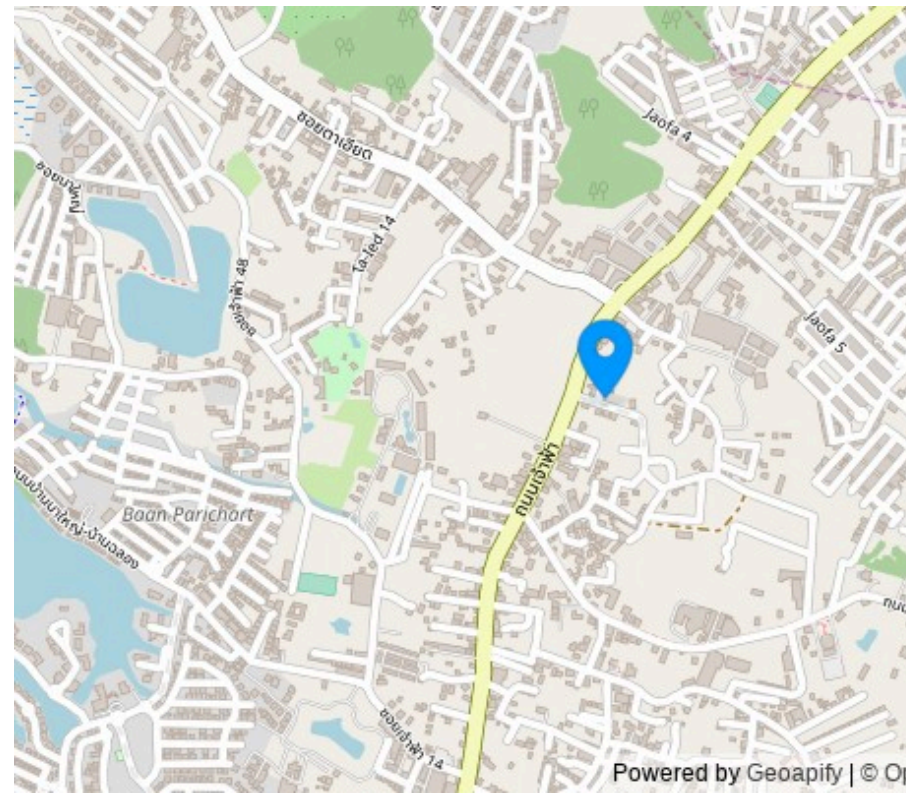




The Project Name: **Wyndham Fantasea Chalong**
Housing Class: **Comfort class**
Completion Date: Year: **2027**



Construction Stage: **Under construction**
Ownership: **Freehold/leasehold available**
Completion Date: Quarter: **4**



LAYOUTS



1-bdr., 28 m²

from ฿ 2,464,000

Bedrooms	1
Living Area	28 m ²
Floors	8
Bathrooms	1
Outdoor area	balcony
Floor	3

Wyndham Fantasea Chalong 1-bedroom apartment in southern Phuket combines tropical charm with modern amenities. Just steps from Robinson Lifestyle Chalong and a short drive from the enchanting southern beaches, this unique development offers you a unique living experience in comfort and well-being. Immerse yourself in the Wyndham Fantasea Condo Chalong lifestyle, from the spacious pool to Southeast Asian-inspired dining, work and gym areas. It's a short walk to Muay Thai Street and RIS Phuket International School. Take advantage of the Wyndham Fantasea, where affordability meets your needs and nature meets modern living. Kalinka Thailand brokers always have unique offers and purchasing conditions.

Layouts



2-bdr., 56 m²

from ฿ 4,984,000

Bedrooms	2
Living Area	56 m ²
Floors	8
Bathrooms	2
Outdoor area	balcony
Floor	4

A 2-bedroom apartment at Wyndham Fantasea Chalong in southern Phuket, where tropical charm meets modern amenities. Just steps from Robinson Lifestyle Chalong and a short drive from the enchanting southern beaches, this unique development offers you a unique living experience in comfort and well-being. Immerse yourself in the Wyndham Fantasea Condo Chalong lifestyle, from the spacious pool to Southeast Asian-inspired dining, work and gym areas. It's a short walk to Muay Thai Street and RIS Phuket International School. Take advantage of the Wyndham Fantasea, where affordability meets your needs and nature meets modern living. Kalinka Thailand brokers always have unique offers and purchasing conditions.

LAYOUTS



2-bdr., 56 m²

from ฿ 4,984,000

Bedrooms	2
Living Area	56 m ²
Floors	8
Bathrooms	2
Outdoor area	balcony
Floor	8

A 2-bedroom apartment at Wyndham Fantasea Chalong in southern Phuket, where tropical charm meets modern amenities. Just steps from Robinson Lifestyle Chalong and a short drive from the enchanting southern beaches, this unique development offers you a unique living experience in comfort and well-being. Immerse yourself in the Wyndham Fantasea Condo Chalong lifestyle, from the spacious pool to Southeast Asian-inspired dining, work and gym areas. It's a short walk to Muay Thai Street and RIS Phuket International School. Take advantage of the Wyndham Fantasea, where affordability meets your needs and nature meets modern living. Kalinka Thailand brokers always have unique offers and purchasing conditions.

LAYOUTS



3-bdr., 92 m²

from ฿ 8,188,000

Bedrooms	3
Living Area	92 m ²
Floors	8
Bathrooms	3
Outdoor area	balcony
Floor	7

A 3-bedroom apartment at Wyndham Fantasea Chalong in southern Phuket, where tropical charm meets modern amenities. Just steps from Robinson Lifestyle Chalong and a short drive from the enchanting southern beaches, this unique development offers you a unique living experience in comfort and well-being. Immerse yourself in the Wyndham Fantasea Condo Chalong lifestyle, from the spacious pool to Southeast Asian-inspired dining, work and gym areas. It's a short walk to Muay Thai Street and RIS Phuket International School. Take advantage of the Wyndham Fantasea, where affordability meets your needs and nature meets modern living. Kalinka Thailand brokers always have unique offers and purchasing conditions.



Marketing Director

Yury Golovanov

y.golovanov@kalinka-realty.com

Kalinka Thailand

+66 97 783 0676

kalinka-thailand.com

office@kalinka-thailand.com

