



Sale

Surin Sands

Surin,

Soi Hat Surin 6



฿ 3 737 000

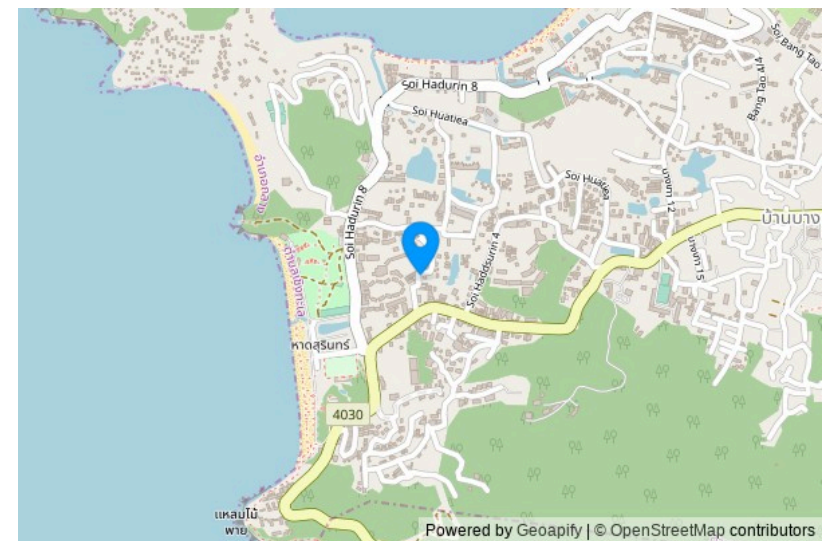
₱ 9 315 481

\$ 110 893

€ 96 818

Sands residential complex, designed in a modern style, is conveniently located just 700 meters from Surin Beach. The complex consists of an eight-story building, which will accommodate 82 apartments of various sizes ranging from 30 to 78 square meters. As part of the project, the complex will feature a rooftop pool, a fitness center, a reception area, parking facilities, as well as a restaurant and a bar. Its ideal location places it between two of Phuket's most popular beaches, Surin and Bang Tao, and it is just 700 meters from the seashore. Due to its proximity, being only a 10-minute walk from Surin Beach, the project is expected to be particularly popular among tourists.

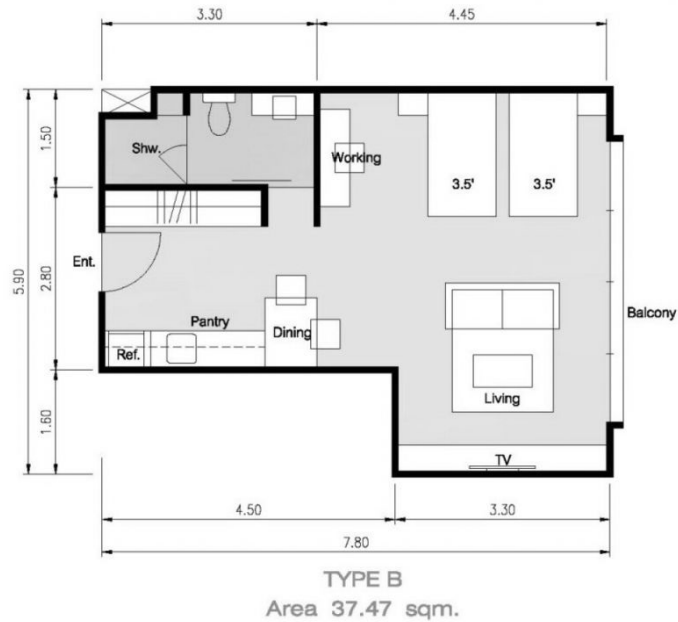




The Project Name: **Surin Sands**
Housing Class: **Comfort class**
Completion Date: Year: **2024**

Construction Stage: **Under construction**
Ownership: **Freehold/leasehold available**
Completion Date: Quarter: **4**

Layouts



Studio, 30 m²

from **฿ 3,737,000**

Bedrooms	Studio
Living Area	30 m ²
Floors	8
Bathrooms	1
Outdoor area	balcony
Furniture package	+
Floor	2

A spacious 30 square meter studio, perfect for both relaxation and investment.

The Surin Sands residential complex, designed in a modern style, is conveniently located just 700 meters from Surin Beach.

Within the project, there are plans for the construction of a rooftop pool, fitness center, reception area, parking, as well as a restaurant and bar. The location is ideal, situated between two of Phuket's most popular beaches, Surin and Bang Tao, and is just 700 meters from the sea. Thanks to its location, only a 10-minute walk from Surin Beach, the project promises to be particularly attractive to tourists.

Layouts



TYPE D
Area 51.06 sqm.

1-bdr., 51 m²

from ₪ 5,997,000

Bedrooms	1
Living Area	51 m ²
Floors	8
Bathrooms	1
Outdoor area	balcony
Furniture package	+
Floor	3

Spacious 51 square meter one-bedroom apartments, perfect for both living and short stays.

The Surin Sands residential complex, designed in a modern style, is conveniently located just 700 meters from Surin Beach.

As part of the project, the complex will feature a rooftop pool, fitness center, reception area, parking facilities, as well as a restaurant and bar. Its location is ideal, situated between two of Phuket's most popular beaches, Surin and Bang Tao, and just 700 meters from the sea. Thanks to its proximity, being only a 10-minute walk from Surin Beach, the project promises to be particularly in demand among tourists.

Layouts



2-bdr., 78 m²
from \$ 10,224,000

Bedrooms	2
Living Area	78 m ²
Floors	8
Bathrooms	2
Outdoor area	balcony
Floor	3

Spacious two-bedroom apartments with an area of 78 square meters, perfect for both families with children and short getaways.

The Surin Sands residential complex, designed in a modern style, is conveniently located just 700 meters from Surin Beach.

As part of the project, the complex will feature a rooftop pool, a fitness center, a reception area, parking facilities, as well as a restaurant and a bar. The location is ideal, situated between Phuket's two most popular beaches, Surin and Bang Tao, and only 700 meters from the shoreline. Thanks to its location, just a 10-minute walk from Surin Beach, the project promises to be especially sought after among tourists.



Marketing Director

Yury Golovanov

y.golovanov@kalinka-realty.com

Kalinka Thailand

+66 97 783 0676

kalinka-thailand.com

office@kalinka-thailand.com

