

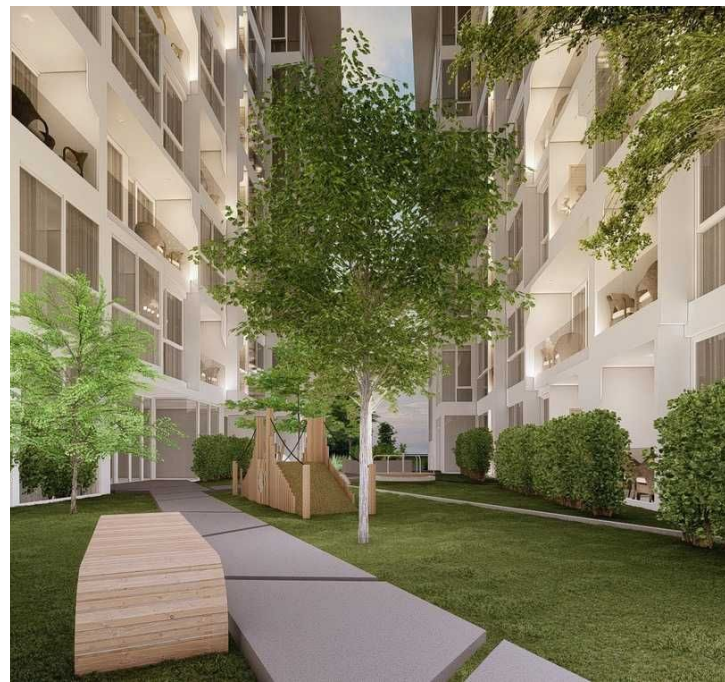


Sale

Utopia Lux Glam

Nai Harn,

Soi Suan Wat



฿ 3 825 000

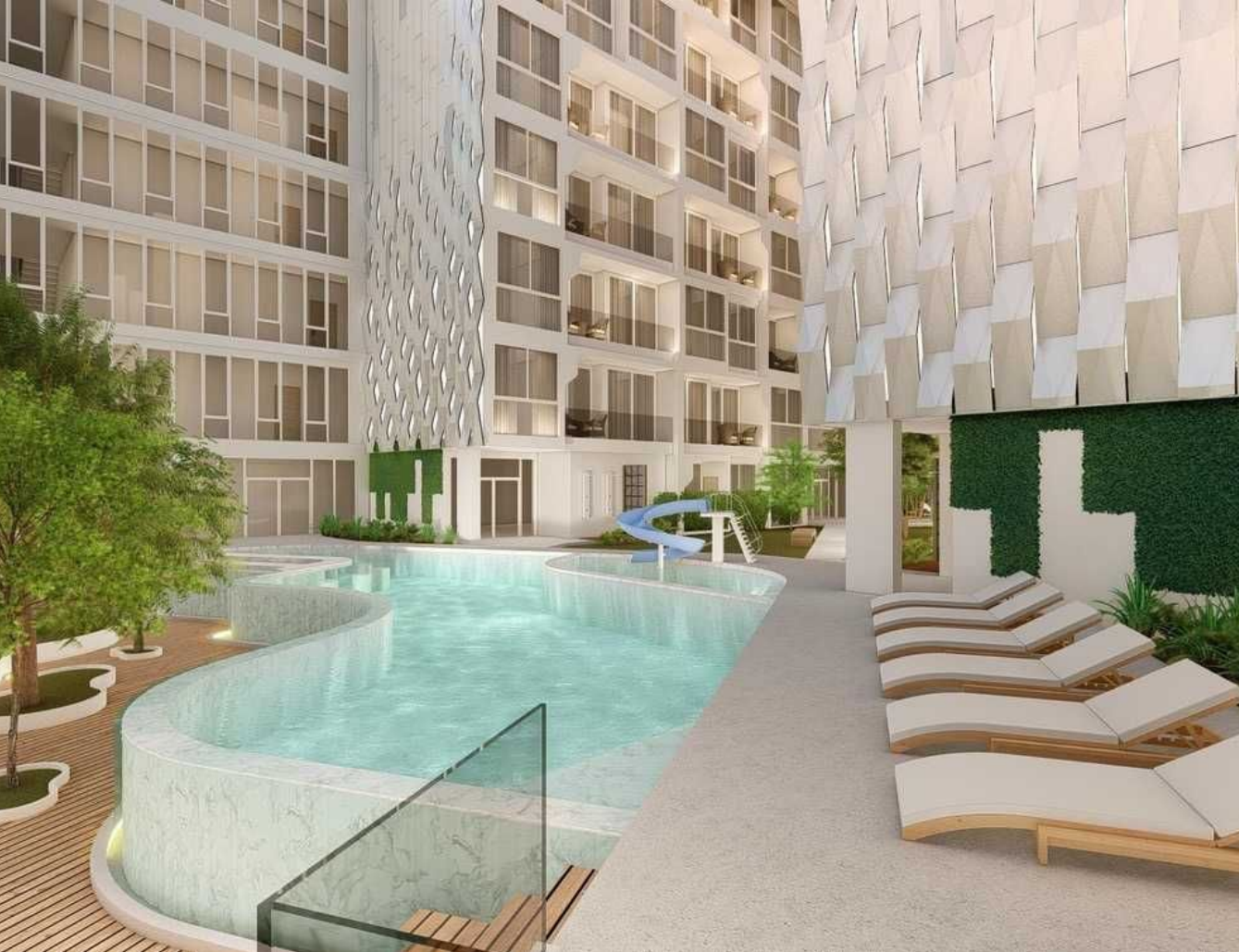
₱ 9 399 096

\$ 111 386

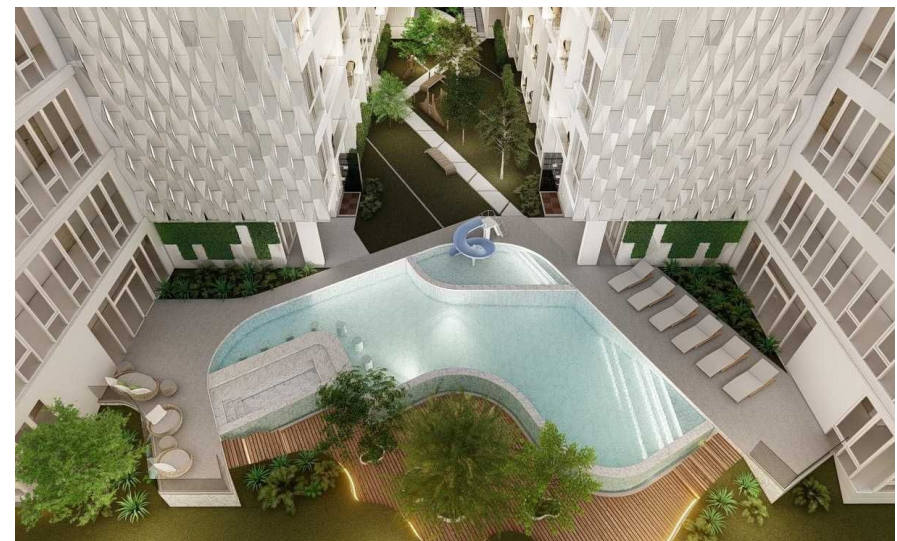
€ 100 891

We present to you the start of sales of Utopia Lux Glam, the fourth phase of the Utopia project. This is a unique place in Phuket, where comfort and sophistication are combined with convenience and natural beauty. Utopia Lux Glam is located within walking distance of two stunning beaches, providing the perfect combination of privacy and closeness to nature. Naiharn Beach, just 800 meters away, invites you to enjoy its clean beaches and boat trips. And Rawai Beach, just 1 km from the project, offers a variety of coastline for you to discover. Utopia Lux Glam consists of two separate residential condominiums - Lux and Glam, totaling 171 units. Each unit has been carefully designed to harmonize with its natural surroundings, providing modern amenities and functionality. Imagine a morning with a gentle sea breeze and panoramic views, enjoying coastal living and urban sophistication. Utopia Lux Glam invites you to discover the magic of Phuket life at its best. Contact Kalinka Thailand brokers now to find out about unique offers and purchasing conditions. Allow yourself to own a piece of this exquisite paradise without the hassle.





The Project Name: **Utopia Lux Glam**
Housing Class: **Comfort class**
Completion Date: Year: **2026**



Construction Stage: **Under construction**
Ownership: **Freehold/leasehold available**
Completion Date: Quarter: **3**

Layouts



1-bdr., 32 m²

from ฿ 3,825,000

Bedrooms	1
Living Area	32 m ²
Floors	8
Bathrooms	1
Outdoor area	balcony
Floor	1

Utopia Lux Glam 1 Bedroom Apartment is located in the fourth phase of the Utopia project, which is steps away from two beautiful beaches - Naiharn and Rawai. This is a unique place in Phuket, where comfort and sophistication are combined with convenience and natural beauty. Naiharn Beach, just 800 meters from Utopia Lux Glam, offers clean beaches and boat trips. And Rawai Beach, which is just 1 km from the project, offers a variety of coastline for you to discover. Utopia Lux Glam consists of two separate residential condominiums - Lux and Glam. The total number of units is 171. Each unit is carefully designed to blend in with its natural surroundings while providing modern amenities and functionality. Imagine a morning with a gentle sea breeze and panoramic views, enjoying coastal living and urban sophistication. Utopia Lux Glam invites you to discover the magic of Phuket life at its best. Contact Kalinka Thailand brokers now to find out about unique offers and purchasing conditions. Allow yourself to own a piece of this exquisite paradise without the hassle.

Layouts



2-bdr., 59.8 m²

from ฿ 5,805,000

Bedrooms	2
Living Area	59.8 m ²
Floors	8
Bathrooms	2
Outdoor area	balcony
Floor	1

Utopia Lux Glam 2 Bedroom Apartment is located in the fourth phase of the Utopia project, which is steps away from two beautiful beaches - Naiharn and Rawai. This is a unique place in Phuket, where comfort and sophistication are combined with convenience and natural beauty. Naiharn Beach, just 800 meters from Utopia Lux Glam, offers clean beaches and boat trips. And Rawai Beach, which is just 1 km from the project, offers a variety of coastline for you to discover. Utopia Lux Glam consists of two separate residential condominiums - Lux and Glam. The total number of units is 171. Each unit is carefully designed to blend in with its natural surroundings while providing modern amenities and functionality. Imagine a morning with a gentle sea breeze and panoramic views, enjoying coastal living and urban sophistication. Utopia Lux Glam invites you to discover the magic of Phuket life at its best. Contact Kalinka Thailand brokers now to find out about unique offers and purchasing conditions. Allow yourself to own a piece of this exquisite paradise without the hassle.

Layouts



2-bdr., 59.77 m²

from ฿ 5,805,000

Bedrooms	2
Living Area	59.77 m ²
Floors	8
Bathrooms	1
Outdoor area	balcony
Floor	2

Utopia Lux Glam 2 Bedroom Apartment is located in the fourth phase of the Utopia project, which is steps away from two beautiful beaches - Naiharn and Rawai. This is a unique place in Phuket, where comfort and sophistication are combined with convenience and natural beauty. Naiharn Beach, just 800 meters from Utopia Lux Glam, offers clean beaches and boat trips. And Rawai Beach, which is just 1 km from the project, offers a variety of coastline for you to discover. Utopia Lux Glam consists of two separate residential condominiums - Lux and Glam. The total number of units is 171. Each unit is carefully designed to blend in with its natural surroundings while providing modern amenities and functionality. Imagine a morning with a gentle sea breeze and panoramic views, enjoying coastal living and urban sophistication. Utopia Lux Glam invites you to discover the magic of Phuket life at its best. Contact Kalinka Thailand brokers now to find out about unique offers and purchasing conditions. Allow yourself to own a piece of this exquisite paradise without the hassle.

Layouts



2-bdr., 59.43 m²

from ฿ 5,850,000

Bedrooms	2
Living Area	59.43 m ²
Floors	8
Bathrooms	1
Outdoor area	balcony
Floor	1

Utopia Lux Glam 2 Bedroom Apartment is located in the fourth phase of the Utopia project, which is steps away from two beautiful beaches - Naiharn and Rawai. This is a unique place in Phuket, where comfort and sophistication are combined with convenience and natural beauty. Naiharn Beach, just 800 meters from Utopia Lux Glam, offers clean beaches and boat trips. And Rawai Beach, which is just 1 km from the project, offers a variety of coastline for you to discover. Utopia Lux Glam consists of two separate residential condominiums - Lux and Glam. The total number of units is 171. Each unit is carefully designed to blend in with its natural surroundings while providing modern amenities and functionality. Imagine a morning with a gentle sea breeze and panoramic views, enjoying coastal living and urban sophistication. Utopia Lux Glam invites you to discover the magic of Phuket life at its best. Contact Kalinka Thailand brokers now to find out about unique offers and purchasing conditions. Allow yourself to own a piece of this exquisite paradise without the hassle.

Layouts



2-bdr., 59.9 m²

from ฿ 5,850,000

Bedrooms	2
Living Area	59.9 m ²
Floors	8
Bathrooms	1
Outdoor area	balcony
Floor	2

Utopia Lux Glam 2 Bedroom Apartment is located in the fourth phase of the Utopia project, which is steps away from two beautiful beaches - Naiharn and Rawai. This is a unique place in Phuket, where comfort and sophistication are combined with convenience and natural beauty. Naiharn Beach, just 800 meters from Utopia Lux Glam, offers clean beaches and boat trips. And Rawai Beach, which is just 1 km from the project, offers a variety of coastline for you to discover. Utopia Lux Glam consists of two separate residential condominiums - Lux and Glam. The total number of units is 171. Each unit is carefully designed to blend in with its natural surroundings while providing modern amenities and functionality. Imagine a morning with a gentle sea breeze and panoramic views, enjoying coastal living and urban sophistication. Utopia Lux Glam invites you to discover the magic of Phuket life at its best. Contact Kalinka Thailand brokers now to find out about unique offers and purchasing conditions. Allow yourself to own a piece of this exquisite paradise without the hassle.



Marketing Director

Yury Golovanov

y.golovanov@kalinka-realty.com

Kalinka Thailand

+66 97 783 0676

kalinka-thailand.com

office@kalinka-thailand.com

