



Sale

Above Element

Bang Tao,

Soi Pasak 1



฿ 5 340 000

₱ 13 212 815

\$ 156 268

€ 144 870

The modern residential complex Above Element will be located in one of the most prestigious areas of Phuket, just 2.5 km from Bangtao Beach.

It is a resort-style condominium in the Mediterranean style with large panoramic windows and all the amenities necessary for comfortable relaxation. The two 7-story buildings house 263 apartments ranging from 38 sq.m. to 138 sq.m.

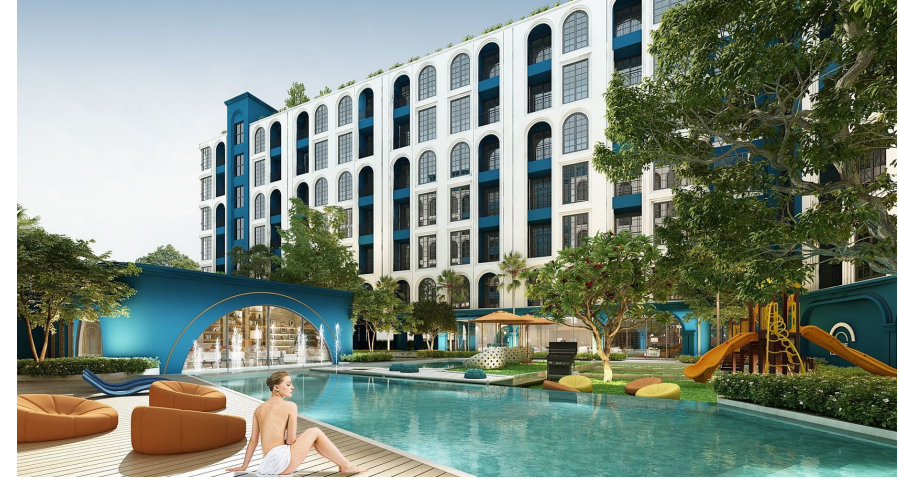
The complex will have two swimming pools for adults and one for children, a professional sports club with group and individual classes, coworking space, a multifunctional library with creative studios, halls for movie screenings and master classes. A children's club with playgrounds, developmental classes, trampolines, and more will be opened for kids.

A garden with photo zones and cocktail bars will be on the rooftop. The two 7-story buildings are located in the very center of the area's infrastructure. Within a 5-minute walk from the complex are restaurants, Porto de Phuket and Boat Avenue shopping galleries, Villa Market supermarket.



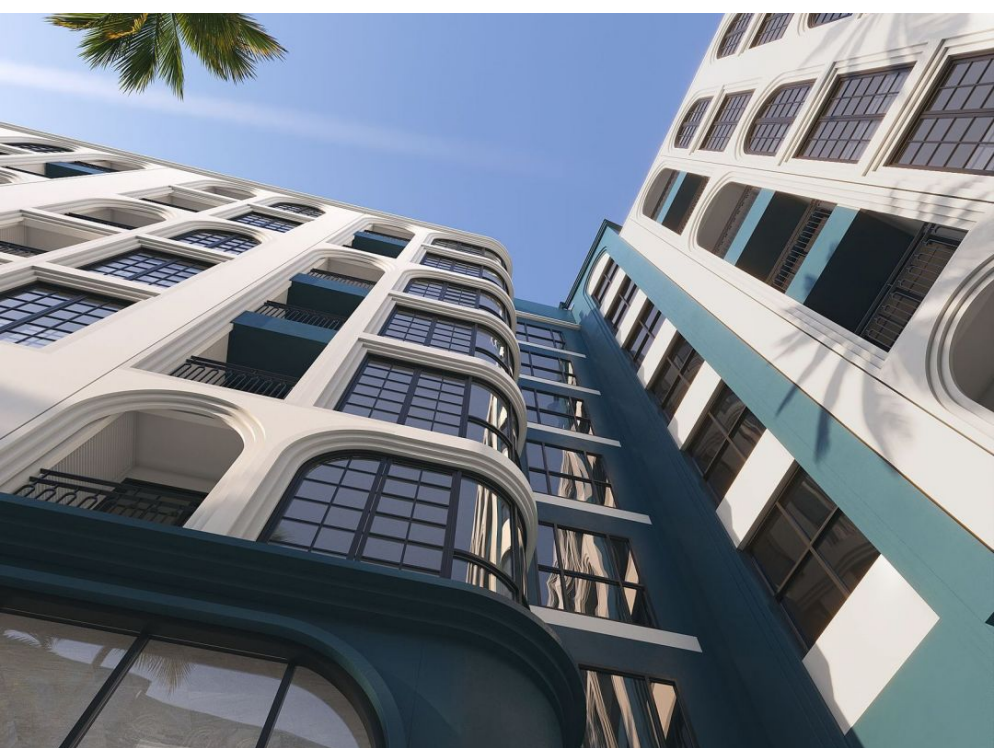


The Project Name: **Кондоминиум Above Element**
Housing Class: **Business class**
Completion Date: Year: **2025**

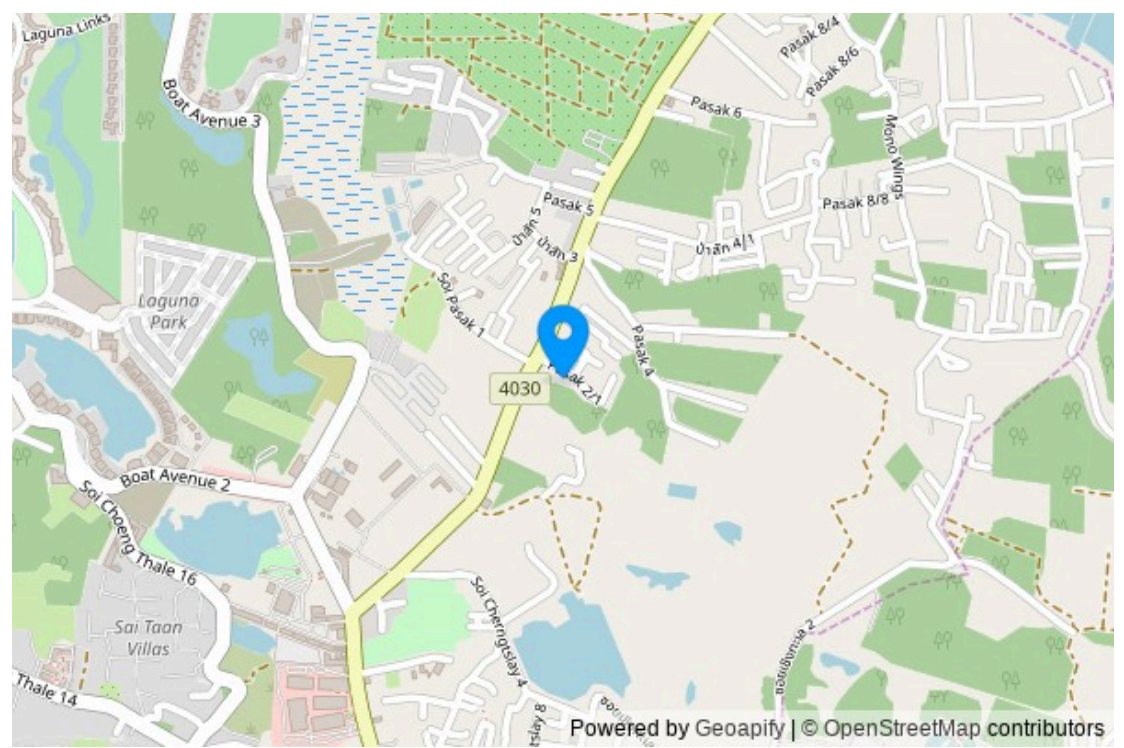


Construction Stage: **Under construction**
Ownership: **Freehold/leasehold available**
Completion Date: Quarter: **4**









Layouts



1-bdr., 38 m²

from ₪ 5,340,000

Bedrooms	1
Living Area	38 m ²
Floors	7
Bathrooms	1
Outdoor area	balcony
Furniture package	+
Floor	2

TYPE 1A : 1 BEDROOM 38 sq.m.

One bedroom apartment in the Above Element Condominium is a wonderful place not only for relaxation but also a profitable investment option.

It is a resort-style condominium in a Mediterranean style, featuring large panoramic windows and everything needed for comfortable relaxation. There are 263 apartments ranging from 38 sq.m. to 138 sq.m. in two 7-story buildings.

The complex will have two swimming pools for adults and one for children, a professional sports club with group and individual classes, coworking space, a multifunctional library with creative studios, rooms for movie screenings and masterclasses. For children, there will be a kids' club with playgrounds, development classes, trampolines, and much more.

A garden with photo zones and cocktail bars will be set up on the roof. The two 7-story buildings are located right in the heart of the area's infrastructure. Restaurants, Porto de Phuket and Boat Avenue shopping galleries, and the Villa Market supermarket are just a 5-minute walk from the complex.

Layouts



1-bdr., 47 m²

from ₪ 6,745,000

Bedrooms	2
Living Area	47 m ²
Floors	7
Bathrooms	1
Outdoor area	balcony
Furniture package	+
Floor	2

TYPE 1B : 1 BEDROOM 47 sq.m.

Two bedroom apartment in the Above Element Condominium is a wonderful place not only for relaxation but also a profitable investment option.

It is a resort-style condominium in a Mediterranean style, featuring large panoramic windows and everything needed for comfortable relaxation. There are 263 apartments ranging from 38 sq.m. to 138 sq.m. in two 7-story buildings.

The complex will have two swimming pools for adults and one for children, a professional sports club with group and individual classes, coworking space, a multifunctional library with creative studios, rooms for movie screenings and masterclasses. For children, there will be a kids' club with playgrounds, development classes, trampolines, and much more.

A garden with photo zones and cocktail bars will be set up on the roof. The two 7-story buildings are located right in the heart of the area's infrastructure. Restaurants, Porto de Phuket and Boat Avenue shopping galleries, and the Villa Market supermarket are just a 5-minute walk from the complex.



CEO Kalinka Thailand

Leonid Ustinov

l.ustinov@kalinka-realty.com

Kalinka Thailand

+66 97 783 0676
kalinka-thailand.com
office@kalinka-thailand.com

