



Sale

Babylon Sky Garden 2

Rawai,

Rawai



฿ 5 186 400

₱ 12 806 363

\$ 156 137

€ 137 332

Babylon Sky Garden 2 in Rawai, Phuket, is an exceptional residential complex that combines modern aesthetics with tropical tranquility. Situated in a unique area surrounded by lush greenery and panoramic views, this project redefines the concept of living.

The complex features a modern design that harmonizes with the natural environment. Clean lines and open spaces highlight the connection with the tropical world. Babylon Sky Garden 2 offers a range of spacious residences, including sophisticated apartments and penthouses, each meticulously designed for comfort and functionality. Residents have access to impressive panoramic views of Rawai and its surroundings, while the landscaped sky gardens on the rooftop create cozy green corners for relaxation. Modern amenities include a swimming pool, fitness center, and communal spaces, promoting an active lifestyle.

Located in Rawai, the complex provides easy access to beaches, nightlife, and a variety of restaurants, while offering the seclusion and tranquility of an exclusive residential enclave. Babylon Sky Garden 2 is not just a home; it's the embodiment of a balanced and elegant lifestyle in one of Phuket's most sought-after locations. For those looking to invest or create the perfect home in Phuket, Babylon Sky Garden 2 presents a unique opportunity. Contact the brokers at Kalinka Thailand for more information and to personally evaluate this outstanding project. Don't miss the chance to be part of this exceptional community.

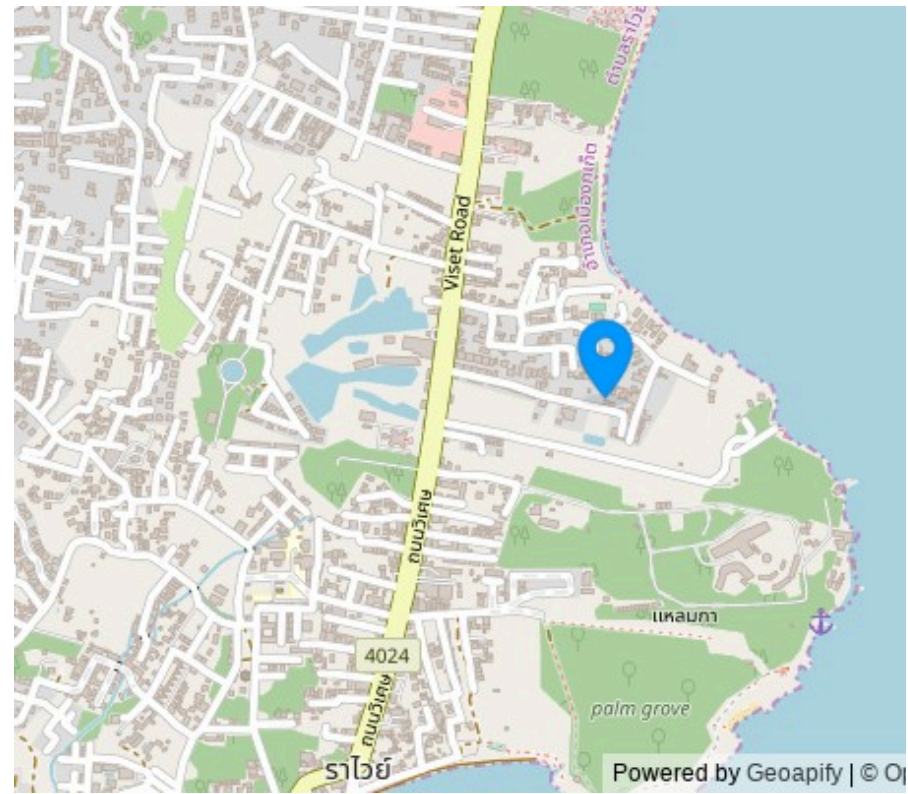




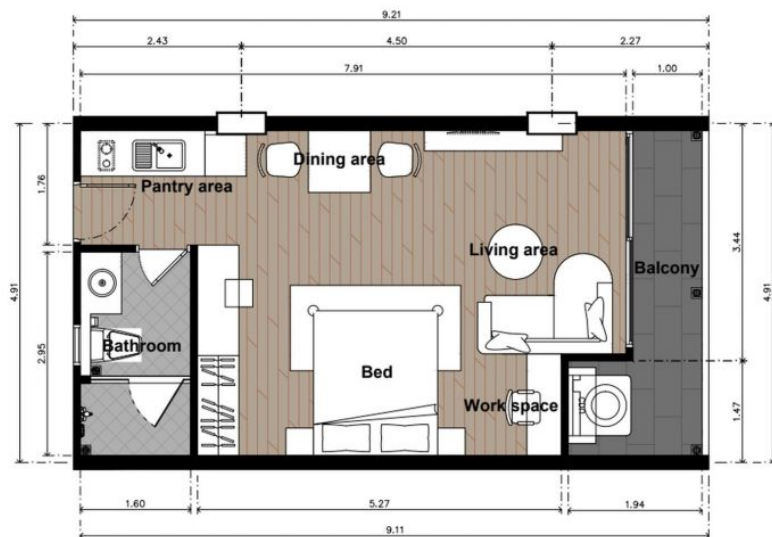
The Project Name: **Babylon Sky Garden 2**
Housing Class: **Business class**
Completion Date: Year: **2025**

Construction Stage: **Under construction**
Ownership: **Freehold/leasehold available**
Completion Date: Quarter: **4**





LAYOUTS



Studio, 43 m²

from \$ 5,186,400

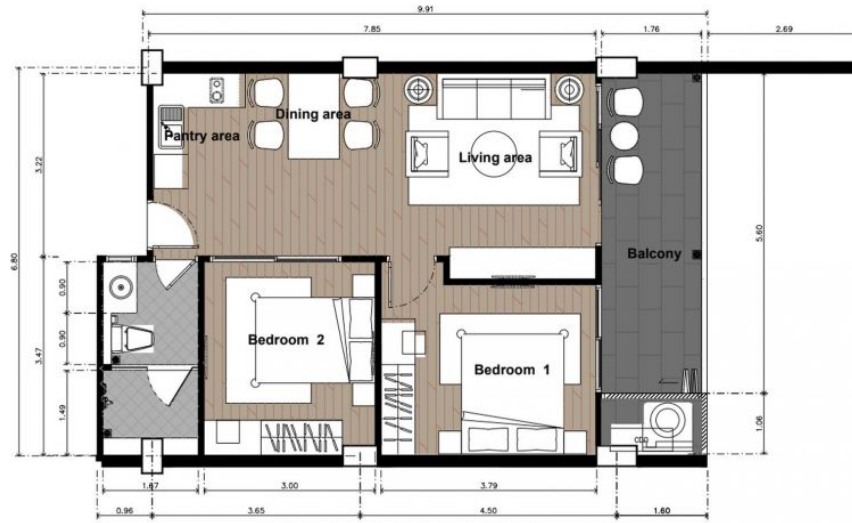
Bedrooms	Studio
Living Area	43 m ²
Floors	5
Bathrooms	1
Outdoor area	balcony
Furniture package	+
Floor	3

Studio apartment in the Babylon Sky Garden 2 is a wonderful place for relaxation and a profitable investment.

The complex features a modern design that harmonizes with the natural environment. Clean lines and open spaces highlight the connection with the tropical world. Babylon Sky Garden 2 offers a range of spacious residences, including sophisticated apartments and penthouses, each meticulously designed for comfort and functionality.

Residents have access to impressive panoramic views of Rawai and its surroundings, while the landscaped sky gardens on the rooftop create cozy green corners for relaxation. Modern amenities include a swimming pool, fitness center, and communal spaces, promoting an active lifestyle.

LAYOUTS



2-bdr., 69 m²

from \$ 6,909,910

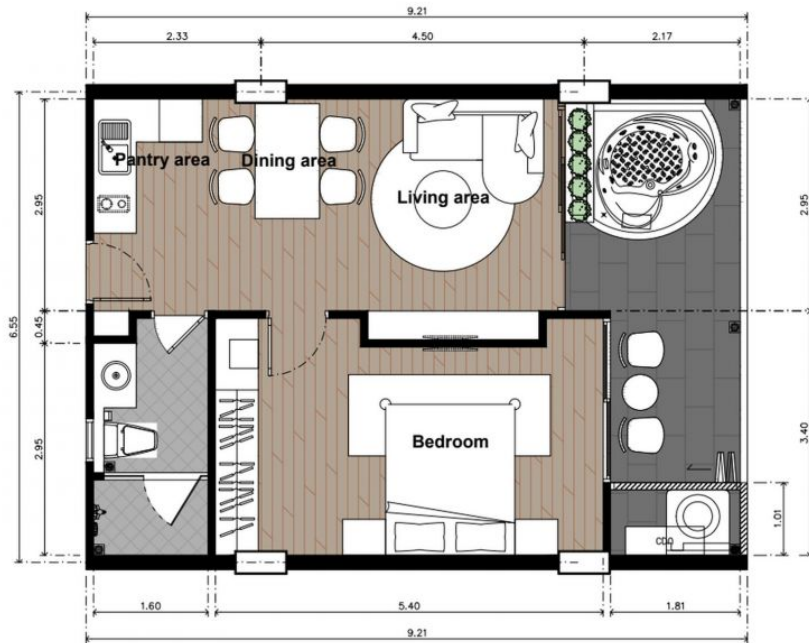
Bedrooms	2
Living Area	69 m ²
Floors	5
Bathrooms	2
Outdoor area	balcony
Furniture package	+
Floor	1

Two bedroom apartment in the Babylon Sky Garden 2 is a wonderful place for relaxation and a profitable investment.

The complex features a modern design that harmonizes with the natural environment. Clean lines and open spaces highlight the connection with the tropical world. Babylon Sky Garden 2 offers a range of spacious residences, including sophisticated apartments and penthouses, each meticulously designed for comfort and functionality.

Residents have access to impressive panoramic views of Rawai and its surroundings, while the landscaped sky gardens on the rooftop create cozy green corners for relaxation. Modern amenities include a swimming pool, fitness center, and communal spaces, promoting an active lifestyle.

Layouts



1-bdr., 57 m²

from ₪ 8,047,200

Bedrooms	1
Living Area	57 m ²
Floors	4
Bathrooms	1
Outdoor area	balcony
Furniture package	+
Floor	5

One bedroom apartment in the Babylon Sky Garden 2 is a wonderful place for relaxation and a profitable investment.

The complex features a modern design that harmonizes with the natural environment. Clean lines and open spaces highlight the connection with the tropical world. Babylon Sky Garden 2 offers a range of spacious residences, including sophisticated apartments and penthouses, each meticulously designed for comfort and functionality.

Residents have access to impressive panoramic views of Rawai and its surroundings, while the landscaped sky gardens on the rooftop create cozy green corners for relaxation. Modern amenities include a swimming pool, fitness center, and communal spaces, promoting an active lifestyle.

Layouts



2-bdr., 71 m²

from ₪ 8,582,000

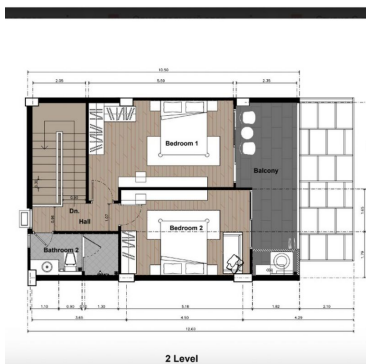
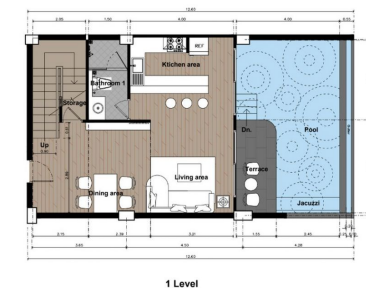
Bedrooms	2
Living Area	71 m ²
Floors	5
Bathrooms	2
Outdoor area	balcony
Furniture package	+
Floor	3

Two bedroom apartment in the Babylon Sky Garden 2 is a wonderful place for relaxation and a profitable investment.

The complex features a modern design that harmonizes with the natural environment. Clean lines and open spaces highlight the connection with the tropical world. Babylon Sky Garden 2 offers a range of spacious residences, including sophisticated apartments and penthouses, each meticulously designed for comfort and functionality.

Residents have access to impressive panoramic views of Rawai and its surroundings, while the landscaped sky gardens on the rooftop create cozy green corners for relaxation. Modern amenities include a swimming pool, fitness center, and communal spaces, promoting an active lifestyle.

Layouts



2-bdr., 145 m²

from ₪ 23,254,400

Bedrooms	2
Living Area	145 m ²
Floors	5
Bathrooms	2
Outdoor area	balcony
Furniture package	+
Floor	1

Two bedroom duplex in the Babylon Sky Garden 2 is a wonderful place for relaxation and a profitable investment.

The complex features a modern design that harmonizes with the natural environment. Clean lines and open spaces highlight the connection with the tropical world. Babylon Sky Garden 2 offers a range of spacious residences, including sophisticated apartments and penthouses, each meticulously designed for comfort and functionality.

Residents have access to impressive panoramic views of Rawai and its surroundings, while the landscaped sky gardens on the rooftop create cozy green corners for relaxation. Modern amenities include a swimming pool, fitness center, and communal spaces, promoting an active lifestyle.



Marketing Director

Yury Golovanov

y.golovanov@kalinka-realty.com

Kalinka Thailand

+66 97 783 0676

kalinka-thailand.com

office@kalinka-thailand.com

