



Sale

Skypark Celeste Condominium

Laguna Area,

Laguna



₱ 4 910 000

₱ 12 589 142

\$ 145 339

€ 133 563

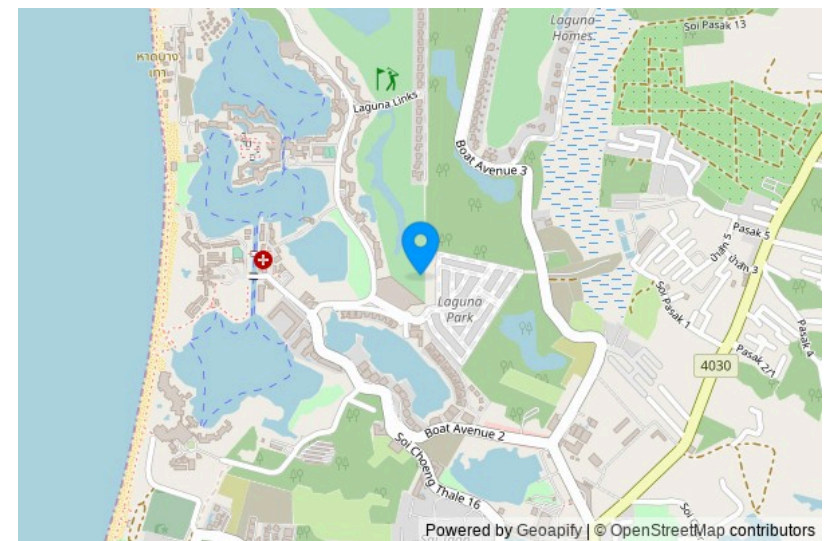
Skypark Aurora and Skypark Celeste in Laguna Phuket offer you the chance to live close to the golf course and Bang Tao Beach. Enjoy serenity in the midst of tropical nature and high-class comfort. Exclusive rooftop relaxation areas, an infinity pool, jacuzzi, jogging track, yoga zones, and barbecue areas provide you with opportunities to relax and take care of your health without leaving the complex. All buildings are connected by picturesque walkways with views of the lagoon.

Located in the heart of the resort area of Laguna Phuket, you will have convenient access to five-star hotels, spas, and the best shopping centers, including Boat Avenue and Central Porto de Phuket.

Inspired by Phuket's traditions, the low-rise buildings of the complex offer V-shaped forms that open up stunning views of the golf course and lakes. Their modern design harmonizes with nature, providing a variety of layout options, from studios to two-bedroom apartments. Choose your ideal finish: fully furnished or basic amenities.

Laguna Phuket, an island icon for 30 years, provides everything for comfortable living: shops, schools, hospitals. Skypark Celeste is the perfect choice for those looking for a home or investment. Under the management of Laguna, your property will be in safe hands. Don't miss the opportunity to turn your dream into reality!





The Project Name: **SkyPark Celeste**
Housing Class: **Business class**
Completion Date: Year: **2024**

Construction Stage: **Under construction**
Ownership: **Freehold/leasehold available**
Completion Date: Quarter: **4**

Layouts



1-bdr., 29 м²

from ₪ 4,910,000

Bedrooms	1
Living Area	29 м ²
Floors	7
Bathrooms	1
Outdoor area	balcony
Floor	2

One-bedroom apartments in Skypark Celeste Condominium will be a wonderful place for relaxation, living, or investment.

Enjoy tranquility surrounded by tropical nature and high-class comfort. Exclusive rooftop relaxation areas, an infinity pool, jacuzzi, jogging track, yoga zones, and barbecue areas provide you with opportunities to relax and take care of your health without leaving the complex. All buildings are connected by picturesque walkways with views of the lagoon.

Located in the heart of the Laguna Phuket resort area, you will have convenient access to five-star hotels, spas, and the best shopping centers, including Boat Avenue and Central Porto de Phuket.

Inspired by Phuket's traditions, the low-rise buildings of the complex offer V-shaped designs that reveal stunning views of the golf course and lakes. Their modern design harmonizes with nature, offering various layout options, from studios to two-bedroom apartments. Choose your ideal finish: fully furnished or basic equipment.

Layouts



1-bdr., 34 м²
from ₪ 5,460,000

Bedrooms	1
Living Area	34 м ²
Floors	7
Bathrooms	1
Outdoor area	balcony
Floor	3

One-bedroom apartments in Skypark Celeste Condominium will be a wonderful place for relaxation, living, or investment.

Enjoy tranquility surrounded by tropical nature and high-class comfort. Exclusive rooftop relaxation areas, an infinity pool, jacuzzi, jogging track, yoga zones, and barbecue areas provide you with opportunities to relax and take care of your health without leaving the complex. All buildings are connected by picturesque walkways with views of the lagoon.

Located in the heart of the Laguna Phuket resort area, you will have convenient access to five-star hotels, spas, and the best shopping centers, including Boat Avenue and Central Porto de Phuket.

Inspired by Phuket's traditions, the low-rise buildings of the complex offer V-shaped designs that reveal stunning views of the golf course and lakes. Their modern design harmonizes with nature, offering various layout options, from studios to two-bedroom apartments. Choose your ideal finish: fully furnished or basic equipment.

Layouts



2-bdr., 43 м²

from ₪ 7,860,000

Bedrooms	2
Living Area	52 м ²
Floors	7
Bathrooms	2
Outdoor area	balcony
Floor	2

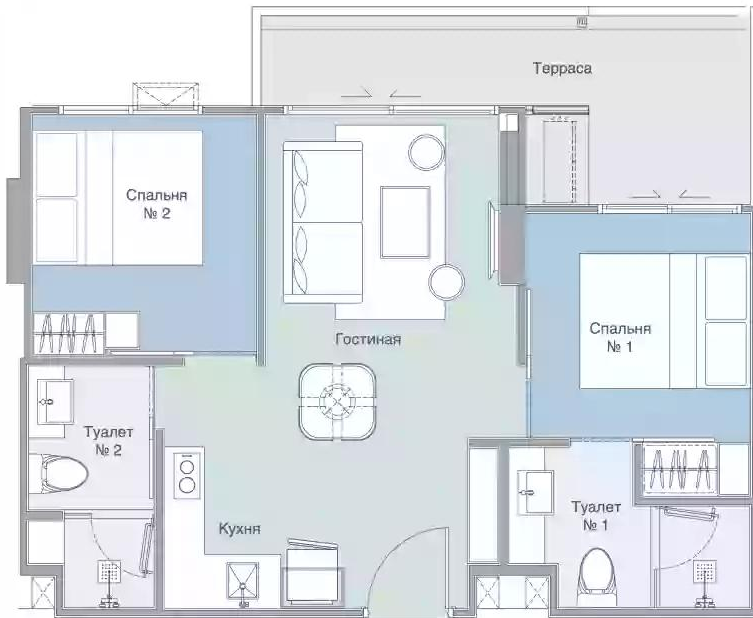
Two-bedroom apartments in Skypark Celeste Condominium will be a wonderful place for relaxation, living, or investment.

Enjoy tranquility surrounded by tropical nature and high-class comfort. Exclusive rooftop relaxation areas, an infinity pool, jacuzzi, jogging track, yoga zones, and barbecue areas provide you with opportunities to relax and take care of your health without leaving the complex. All buildings are connected by picturesque walkways with views of the lagoon.

Located in the heart of the Laguna Phuket resort area, you will have convenient access to five-star hotels, spas, and the best shopping centers, including Boat Avenue and Central Porto de Phuket.

Inspired by Phuket's traditions, the low-rise buildings of the complex offer V-shaped designs that reveal stunning views of the golf course and lakes. Their modern design harmonizes with nature, offering various layout options, from studios to two-bedroom apartments. Choose your ideal finish: fully furnished or basic equipment.

Layouts



2-bdr., 52 м²
from ₪ 9,230,000

Bedrooms	2
Living Area	46 м ²
Floors	7
Bathrooms	2
Outdoor area	balcony
Floor	7

Two-bedroom apartments in Skypark Celeste Condominium will be a wonderful place for relaxation, living, or investment.

Enjoy tranquility surrounded by tropical nature and high-class comfort. Exclusive rooftop relaxation areas, an infinity pool, jacuzzi, jogging track, yoga zones, and barbecue areas provide you with opportunities to relax and take care of your health without leaving the complex. All buildings are connected by picturesque walkways with views of the lagoon.

Located in the heart of the Laguna Phuket resort area, you will have convenient access to five-star hotels, spas, and the best shopping centers, including Boat Avenue and Central Porto de Phuket.

Inspired by Phuket's traditions, the low-rise buildings of the complex offer V-shaped designs that reveal stunning views of the golf course and lakes. Their modern design harmonizes with nature, offering various layout options, from studios to two-bedroom apartments. Choose your ideal finish: fully furnished or basic equipment.



Marketing Director

Yury Golovanov

y.golovanov@kalinka-realty.com

Kalinka Thailand

+66 97 783 0676

kalinka-thailand.com

office@kalinka-thailand.com

