



**Sale**

## **Fantasea Condo Kamala**

Kamala,

Hua Khuan Nuea



**฿ 3 332 000**

**₱ 8 244 401**

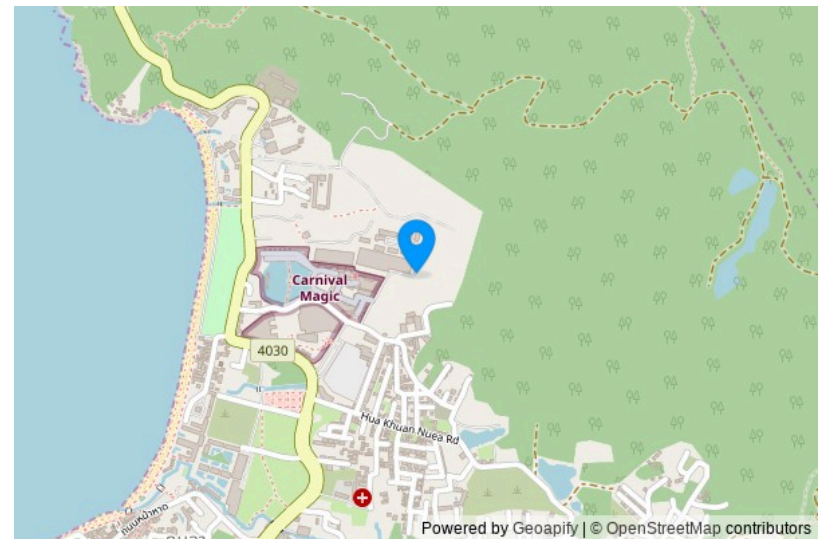
**\$ 97 507**

**€ 90 395**

Fantasea Condo Kamala, an example of a modern residential complex, is conveniently located just 800 meters from Kamala Beach. The complex consists of two seven-story buildings housing 164 apartments of various sizes - from 26 to 53 square meters. Amenities for residents include a swimming pool, terrace, and fitness center. Thanks to its location, the Fantasea Condo Kamala is within a 5-10 minute walk from a variety of infrastructure, including banks, restaurants, shops, and massage parlors. Within walking distance are a 24-hour minimarket, the Big C hypermarket, and local farmer's markets. The famous Cafe Del Mar beach club, as well as the evening parks Fantasea and Carnival Magic, are located on the neighboring street. The construction of the condominium is undertaken by Fantasea Plus, a Thai construction company with extensive experience in Phuket. Their portfolio includes the already implemented project Ocean Palms Villa Bangtao, as well as current construction projects, including Fantasea Condo Kamala, Ocean Palms Condo Bangtao, and Chalong Bay View.





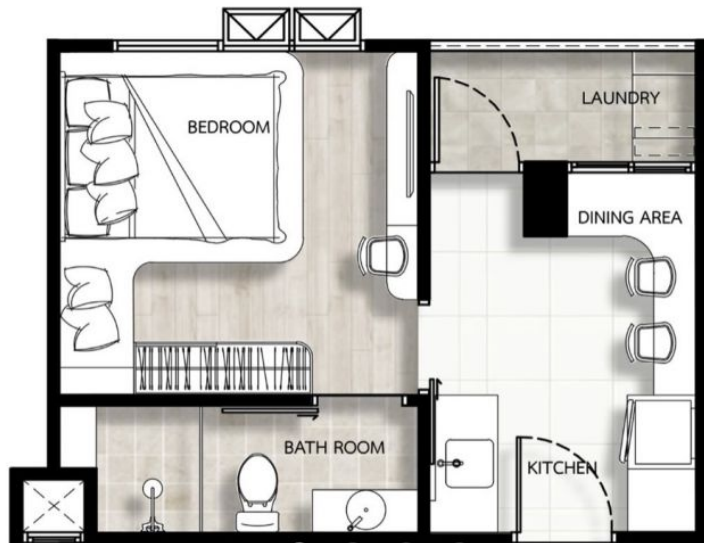


The Project Name: **Fantasea Condo Kamala**  
Housing Class: **Comfort class**  
Completion Date: Year: **2024**

Construction Stage: **Under construction**  
Ownership: **Freehold/leasehold available**  
Completion Date: Quarter: **4**

## Layouts

ROOM PLAN 1A-1



**1-bdr., 26.7 m<sup>2</sup>**

**from ₱ 3,332,000**

Bedrooms	1
Living Area	26.7 m <sup>2</sup>
Floors	7
Bathrooms	1
Outdoor area	balcony
Floor	2

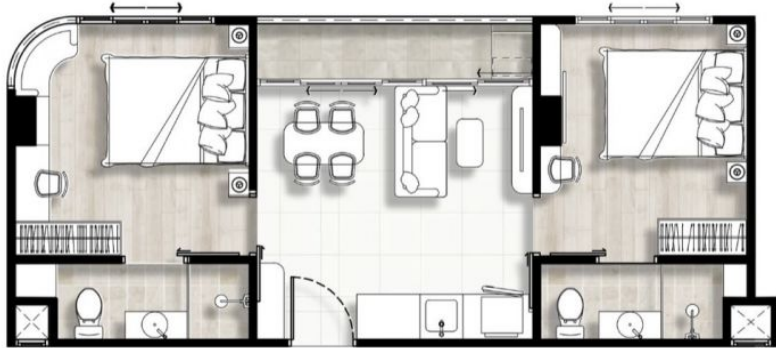
Compact and functional one-bedroom apartments of 26 sq.m., equipped with everything necessary for living.

Fantasea Condo Kamala, an example of a modern residential complex, is conveniently located just 800 meters from Kamala Beach. The complex consists of two seven-story buildings housing 164 apartments of various sizes - from 26 to 53 square meters. Amenities for residents include a swimming pool, terrace, and fitness center.

Thanks to its location, Fantasea Condo Kamala is within a 5-10 minute walk from a variety of infrastructure, including banks, restaurants, shops, and massage parlors. Within walking distance are a 24-hour minimarket, the Big C hypermarket, and local farmer's markets. The famous Cafe Del Mar beach club, as well as the evening parks Fantasea and Carnival Magic, are located on the neighboring street.

The construction of the condominium is undertaken by Fantasea Plus, a Thai construction company with extensive experience in Phuket. Their portfolio includes the already implemented project Ocean Palms Villa Bangtao, as well as current construction projects, including Fantasea Condo Kamala, Ocean Palms Condo Bangtao, and Chalong Bay View.

## Layouts



**2-bdr., 47 M<sup>2</sup>**

**from ₱ 4,463,000**

Bedrooms	2
Living Area	47 M <sup>2</sup>
Floors	7
Bathrooms	2
Outdoor area	balcony
Floor	2

A two-bedroom apartment of 47 sq.m. is perfectly suited for families with children or for vacations for several families.

Fantasea Condo Kamala, an example of a modern residential complex, is conveniently located just 800 meters from Kamala Beach. The complex consists of two seven-story buildings housing 164 apartments of various sizes - from 26 to 53 square meters. Amenities for residents include a swimming pool, terrace, and fitness center.

Thanks to its location, Fantasea Condo Kamala is within a 5-10 minute walk from a variety of infrastructure, including banks, restaurants, shops, and massage parlors. Within walking distance are a 24-hour minimarket, the Big C hypermarket, and local farmer's markets. The famous Cafe Del Mar beach club, as well as the evening parks Fantasea and Carnival Magic, are located on the neighboring street.

The construction of the condominium is undertaken by Fantasea Plus, a Thai construction company with extensive experience in Phuket. Their portfolio includes the already implemented project Ocean Palms Villa Bangtao, as well as current construction projects, including Fantasea Condo Kamala, Ocean Palms Condo Bangtao, and Chalong Bay View.





Marketing Director

**Yury Golovanov**

[y.golovanov@kalinka-realty.com](mailto:y.golovanov@kalinka-realty.com)

Kalinka Thailand

+66 97 783 0676

[kalinka-thailand.com](http://kalinka-thailand.com)

[office@kalinka-thailand.com](mailto:office@kalinka-thailand.com)

